

\$350,000 - 65 165 Cy Becker Boulevard, Edmonton

MLS® #E4462014

\$350,000

4 Bedroom, 2.50 Bathroom, 1,608 sqft

Condo / Townhouse on 0.00 Acres

Cy Becker, Edmonton, AB

Step into modern elegance in this 4-bed 3-bath end-unit townhouse with low condo fees of only \$216 per month! With its clean lines, sleek finishes, and thoughtful design, this home is perfect for those who love style and comfort. Main floor welcomes you with a bright living room that opens onto a private balcony-perfect for morning coffee or evening wind-downs. Dining area flows seamlessly into the stunning kitchen, where black cabinets contrast beautifully with white quartz counters. S/S appliances and a walk-in pantry complete this modern culinary space. A bedroom and 2-piece bath add versatility to the main level. Upstairs, plush carpet leads you to a spacious primary bedroom featuring a walk-in closet and a 4-piece ensuite. Two additional bdrms and another 4-piece bath offer plenty of space for family and guests. Enjoy your own outdoor retreat on the terrace and the convenience of a 2-car attached garage. Great location near all amenities and quick access to the Henday. Available for fast possession!

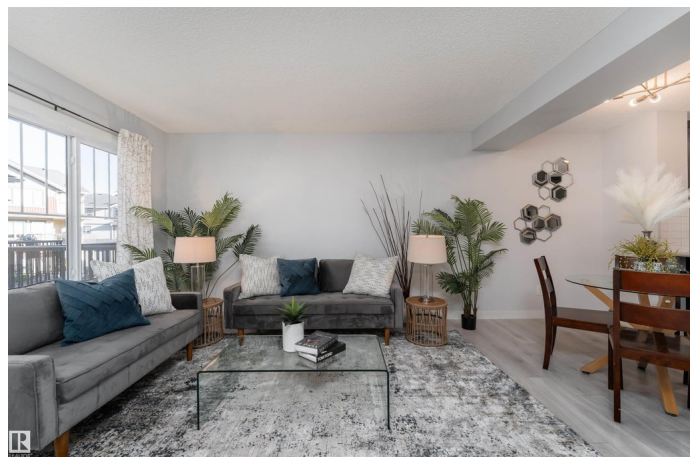
Built in 2017

Essential Information

MLS® # E4462014

Price \$350,000

Bedrooms 4



Bathrooms	2.50
Full Baths	2
Half Baths	1
Square Footage	1,608
Acres	0.00
Year Built	2017
Type	Condo / Townhouse
Sub-Type	Townhouse
Style	3 Storey
Status	Active

Community Information

Address	65 165 Cy Becker Boulevard
Area	Edmonton
Subdivision	Cy Becker
City	Edmonton
County	ALBERTA
Province	AB
Postal Code	T5Y 3R4

Amenities

Amenities	Parking-Visitor
Parking	Double Garage Attached

Interior

Interior Features	ensuite bathroom
Appliances	Dishwasher-Built-In, Dryer, Microwave Hood Fan, Refrigerator, Stove-Electric, Washer
Heating	Forced Air-1, Natural Gas
Stories	2
Has Basement	Yes
Basement	None, No Basement

Exterior

Exterior	Wood, Stone, Vinyl
Exterior Features	Golf Nearby, Landscaped, Playground Nearby, Schools, Shopping Nearby
Roof	Asphalt Shingles
Construction	Wood, Stone, Vinyl

Foundation Concrete Perimeter

School Information

Elementary Belvedere School
Middle Steele Heights School
High M.E. LaZerte School

Additional Information

Date Listed October 14th, 2025
Days on Market 1
Zoning Zone 03
Condo Fee \$216

DATA IS DEEMED RELIABLE BUT IS NOT GUARANTEED ACCURATE BY THE REALTORS® ASSOCIATION OF EDMONTON. COPYRIGHT 2025 BY THE REALTORS® ASSOCIATION OF EDMONTON. ALL RIGHTS RESERVED.Trademarks are owned or controlled by the Canadian Real Estate Association (CREA) and identify real estate professionals who are members of CREA (REALTOR®, REALTORS®) and/or the quality of services they provide (MLS®, Multiple Listing Service®)
Listing information last updated on October 15th, 2025 at 9:32am MDT