

\$439,900 - 4 Gordon Crescent, St. Albert

MLS® #E4458163

\$439,900

4 Bedroom, 1.50 Bathroom, 1,535 sqft
Single Family on 0.00 Acres

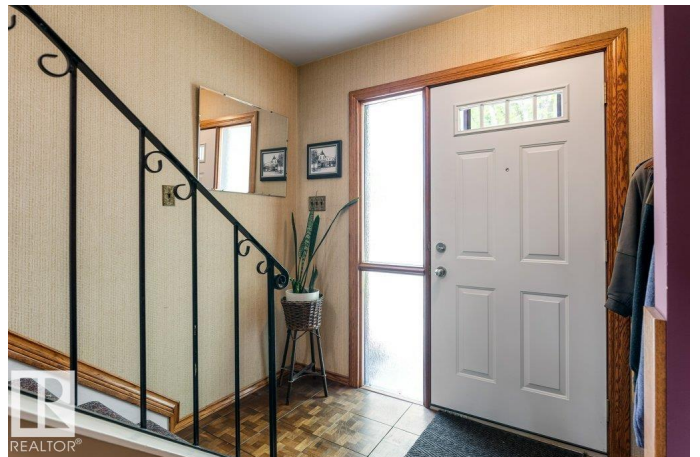
Grandin, St. Albert, AB

Located in the Mature Neighbourhood of Grandin this charming home has been lovingly maintained by its current owners of 51 years. It boasts fantastic curb appeal & is nestled in a sought-after, tree-lined community. Step inside to a traditional layout that offers comfort & functionality, featuring an updated kitchen w/modern cabinets, appliances & separate dining room, perfect for family meals & entertaining. The upper level includes 4 spacious bedrooms, while the fully finished basement offers an office, large recreation/family room, & separate side entrance—ideal for extended family or future suite potential. Enjoy the outdoors in the expansive backyard, filled with mature trees, shrubs, perennials, & well-kept vegetable garden. Additional highlights include an oversized double detached garage, a large driveway with ample parking, central air conditioning for year-round comfort & new windows throughout. Don't miss owning this exceptional home in a quiet, family-friendly location.

Built in 1962

Essential Information

MLS® #	E4458163
Price	\$439,900



Bedrooms	4
Bathrooms	1.50
Full Baths	1
Half Baths	1
Square Footage	1,535
Acres	0.00
Year Built	1962
Type	Single Family
Sub-Type	Detached Single Family
Style	2 Storey
Status	Active

Community Information

Address	4 Gordon Crescent
Area	St. Albert
Subdivision	Grandin
City	St. Albert
County	ALBERTA
Province	AB
Postal Code	T8N 0V6

Amenities

Amenities	Air Conditioner, Deck
Parking	Double Garage Detached

Interior

Appliances	Air Conditioning-Central, Dishwasher-Built-In, Dryer, Freezer, Garage Control, Garage Opener, Garburator, Microwave Hood Fan, Refrigerator, Stove-Gas, Washer, Window Coverings
Heating	Forced Air-1, Natural Gas
Stories	3
Has Basement	Yes
Basement	Full, Finished

Exterior

Exterior	Wood, Brick, Stucco
Exterior Features	Fenced, Flat Site, Landscaped, Playground Nearby, Public Transportation, Schools, Shopping Nearby, Vegetable Garden
Roof	Asphalt Shingles

Construction	Wood, Brick, Stucco
Foundation	Concrete Perimeter

Additional Information

Date Listed	September 17th, 2025
Zoning	Zone 24

DATA IS DEEMED RELIABLE BUT IS NOT GUARANTEED ACCURATE BY THE REALTORS® ASSOCIATION OF EDMONTON. COPYRIGHT 2025 BY THE REALTORS® ASSOCIATION OF EDMONTON. ALL RIGHTS RESERVED. Trademarks are owned or controlled by the Canadian Real Estate Association (CREA) and identify real estate professionals who are members of CREA (REALTOR®, REALTORS®) and/or the quality of services they provide (MLS®, Multiple Listing Service®)

Listing information last updated on September 17th, 2025 at 5:02pm MDT