

# \$195,000 - 504 10025 113 Street, Edmonton

MLS® #E4457897

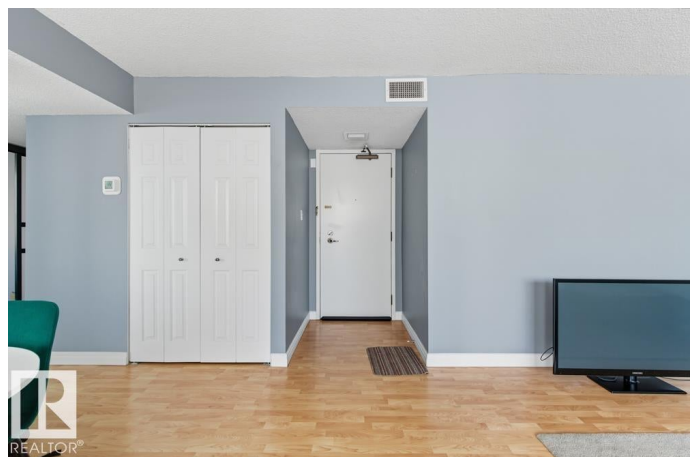
**\$195,000**

1 Bedroom, 1.50 Bathroom, 943 sqft

Condo / Townhouse on 0.00 Acres

W&A hkw&A nt&A win, Edmonton, AB

**DOWNTOWN LIVING WITH STYLE AND FUNCTION!** Welcome to 504 @ Eton Park. A spacious 1-BEDROOM + large DEN condo offering the perfect blend of COMFORT, STYLE + CONVENIENCE. Nearly 950 SQFT in a QUIET concrete and brick building, this home boasts a BRIGHT and OPEN layout with a generous living space and dining area—ideal for entertaining. The sleek kitchen offers tons of natural light, great cabinet space, and room to create your favourite meals. The ENORMOUS BEDROOM that is the size of a living room includes a FULL-WALL CLOSET and private 4PC ENSUITE, while a separate 2PC BATH adds convenience for guests. Need a home office, hobby space or a 2nd bedroom? The additional DEN is the perfect solution. IN-SUITE LAUNDRY and storage complete the interior. With downtown amenities, restaurants, RIVER VALLEY TRAILS, and LRT all within walking distance, this condo delivers the ultimate urban lifestyle. A fantastic opportunity for FIRST-TIME BUYERS, professionals, or investors alike!



Built in 1978

## Essential Information

MLS® # E4457897

Price \$195,000

Bedrooms	1
Bathrooms	1.50
Full Baths	1
Half Baths	1
Square Footage	943
Acres	0.00
Year Built	1978
Type	Condo / Townhouse
Sub-Type	Apartment High Rise
Style	Single Level Apartment
Status	Active

### Community Information

Address	504 10025 113 Street
Area	Edmonton
Subdivision	WÃ©hkwÃ©ntÃ©win
City	Edmonton
County	ALBERTA
Province	AB
Postal Code	T5K 2K8

### Amenities

Amenities	On Street Parking, Intercom, Parking-Visitor, Sunroom
Parking	Heated, Underground

### Interior

Interior Features	ensuite bathroom
Appliances	Dishwasher-Built-In, Dryer, Microwave Hood Fan, Refrigerator, Stove-Electric, Washer
Heating	Fan Coil, Natural Gas
# of Stories	17
Stories	1
Has Basement	Yes
Basement	None, No Basement

### Exterior

Exterior	Concrete, Brick
Exterior Features	Park/Reserve, Playground Nearby, Public Transportation, River Valley View, Schools, Shopping Nearby, View City, View Downtown

Roof	Tar & Gravel
Construction	Concrete, Brick
Foundation	Concrete Perimeter

**Additional Information**

Date Listed	September 15th, 2025
Days on Market	1
Zoning	Zone 12
Condo Fee	\$783

DATA IS DEEMED RELIABLE BUT IS NOT GUARANTEED ACCURATE BY THE REALTORS® ASSOCIATION OF EDMONTON. COPYRIGHT 2025 BY THE REALTORS® ASSOCIATION OF EDMONTON. ALL RIGHTS RESERVED.Trademarks are owned or controlled by the Canadian Real Estate Association (CREA) and identify real estate professionals who are members of CREA (REALTOR®, REALTORS®) and/or the quality of services they provide (MLS®, Multiple Listing Service®)

Listing information last updated on September 16th, 2025 at 4:32am MDT