

\$1,495,000 - 682 Howatt Drive, Edmonton

MLS® #E4455793

\$1,495,000

4 Bedroom, 3.50 Bathroom, 2,294 sqft
Single Family on 0.00 Acres

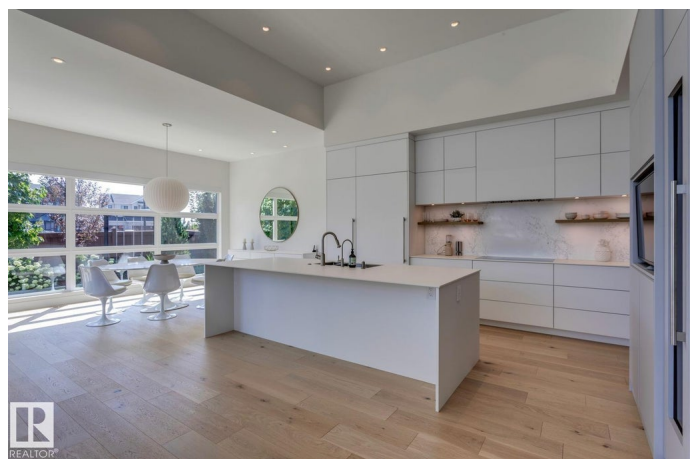
Hays Ridge Area, Edmonton, AB

Prepare to be impressed! Architecturally designed SHOWSTOPPER in one of Edmonton's most vibrant estate communities! This exquisite Birkholz built luxury bungalow has been developed with the utmost attention to detail and quality finishing. The extraordinary home offers over 4200+ sqft of living space and sits upon an immaculate 8400+ sqft corner lot. Features include: 4 bed/3.5 baths, gorgeous kitchen, 14' ceilings, floor to ceiling windows, exercise room, home theatre/den, triple/tandem garage, rec room, extensive use of quartz/hardwood, top of line appliances, premium cabinetry, 2 fireplaces, home automation system, custom finishings and more! Outside is the spectacular and opulent yard w/multi-tiered patio area. Steps from ravine trails and golf course views, and minutes from all other amenities. This is a truly exceptional property!

Built in 2019

Essential Information

MLS® #	E4455793
Price	\$1,495,000
Bedrooms	4
Bathrooms	3.50
Full Baths	3
Half Baths	1



Square Footage	2,294
Acres	0.00
Year Built	2019
Type	Single Family
Sub-Type	Detached Single Family
Style	Bungalow
Status	Active

Community Information

Address	682 Howatt Drive
Area	Edmonton
Subdivision	Hays Ridge Area
City	Edmonton
County	ALBERTA
Province	AB
Postal Code	T6W 3K3

Amenities

Amenities	Air Conditioner, Ceiling 10 ft., Ceiling 9 ft., Deck, No Animal Home, No Smoking Home, Sprinkler Sys-Underground, Vaulted Ceiling, Natural Gas BBQ Hookup
Parking	Heated, Tandem, Triple Garage Attached

Interior

Interior Features	ensuite bathroom
Appliances	Air Conditioning-Central, Dryer, Hood Fan, Refrigerator, Washer, Water Softener, Window Coverings, Wine/Beverage Cooler, Dishwasher-Two, Oven Built-In-Two, Stove-Countertop Inductn, Garage Heater
Heating	Forced Air-1, Natural Gas
Fireplace	Yes
Fireplaces	See Remarks
Stories	2
Has Basement	Yes
Basement	Full, Finished

Exterior

Exterior	Wood, Stone, Stucco
Exterior Features	Airport Nearby, Corner Lot, Fenced, Flat Site, Golf Nearby, Landscaped, Playground Nearby, Schools, Shopping Nearby
Roof	EPDM Membrane

Construction	Wood, Stone, Stucco
Foundation	Concrete Perimeter

School Information

Elementary	Steinhauer
Middle	DS Mackenzie
High	Dr. Anne Anderson

Additional Information

Date Listed	September 2nd, 2025
Days on Market	4
Zoning	Zone 55
HOA Fees	487
HOA Fees Freq.	Annually

DATA IS DEEMED RELIABLE BUT IS NOT GUARANTEED ACCURATE BY THE REALTORS® ASSOCIATION OF EDMONTON. COPYRIGHT 2025 BY THE REALTORS® ASSOCIATION OF EDMONTON. ALL RIGHTS RESERVED. Trademarks are owned or controlled by the Canadian Real Estate Association (CREA) and identify real estate professionals who are members of CREA (REALTOR®, REALTORS®) and/or the quality of services they provide (MLS®, Multiple Listing Service®)

Listing information last updated on September 5th, 2025 at 10:32pm MDT