

Courtesy Of Ricky D Hill Of RE/MAX Elite

\$475,000 - 7229 83 Avenue, Edmonton

MLS® #E4454027

\$475,000

5 Bedroom, 2.00 Bathroom, 1,021 sqft
Single Family on 0.00 Acres

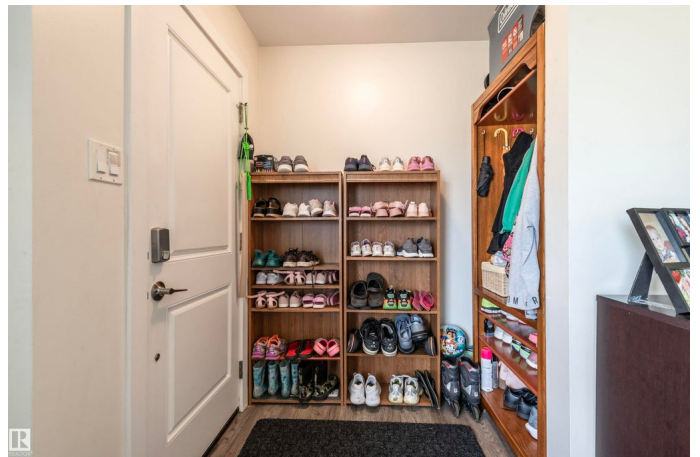
Kenilworth, Edmonton, AB

Fully Renovated Half-Duplex with Legal Suite!
This beautifully updated 1,000 sq. ft. half-duplex bungalow is move-in ready and perfect for both homeowners and investors. Featuring a 3-bedroom main floor plus a legal 2-bedroom basement suite, this property offers style, comfort, and income potential. Every detail has been taken care of with a complete renovation in the last 2 years. Updates include: New roof, windows, furnace, and hot water tank. Modern kitchens with updated cabinetry, countertops, and stainless steel appliances. Stylish bathrooms with contemporary finishes. Fresh flooring, paint, trim, and lighting throughout. The home also comes with a single-car detached garage, private yard space, and separate entrances for each suite, ensuring privacy and convenience. Whether you're looking for a family home with a mortgage helper or a smart investment property, this fully finished bungalow checks every box. Great location close to schools, parks, shopping, and transit.

Built in 1965

Essential Information

MLS® #	E4454027
Price	\$475,000
Bedrooms	5



Bathrooms	2.00
Full Baths	2
Square Footage	1,021
Acres	0.00
Year Built	1965
Type	Single Family
Sub-Type	Half Duplex
Style	Bungalow
Status	Active

Community Information

Address	7229 83 Avenue
Area	Edmonton
Subdivision	Kenilworth
City	Edmonton
County	ALBERTA
Province	AB
Postal Code	T6B 0G7

Amenities

Amenities	Detectors Smoke
Parking	Single Garage Detached

Interior

Appliances	Dryer-Two, Refrigerators-Two, Stoves-Two, Washers-Two, Dishwasher-Two
Heating	Forced Air-2, Natural Gas
Stories	2
Has Suite	Yes
Has Basement	Yes
Basement	Full, Finished

Exterior

Exterior	Wood, Asphalt, Stucco
Exterior Features	Back Lane, Fenced, Flat Site, Golf Nearby, Landscaped, Paved Lane, Playground Nearby, Public Transportation, Schools, Shopping Nearby
Roof	Asphalt Shingles
Construction	Wood, Asphalt, Stucco
Foundation	Concrete Perimeter

Additional Information

Date Listed August 21st, 2025

Days on Market 75

Zoning Zone 18

DATA IS DEEMED RELIABLE BUT IS NOT GUARANTEED ACCURATE BY THE REALTORS® ASSOCIATION OF EDMONTON. COPYRIGHT 2025 BY THE REALTORS® ASSOCIATION OF EDMONTON. ALL RIGHTS RESERVED. Trademarks are owned or controlled by the Canadian Real Estate Association (CREA) and identify real estate professionals who are members of CREA (REALTOR®, REALTORS®) and/or the quality of services they provide (MLS®, Multiple Listing Service®)

Listing information last updated on November 4th, 2025 at 1:47pm MST