

\$269,980 - 4 12815 Cumberland Road, Edmonton

MLS® #E4453372

\$269,980

2 Bedroom, 1.00 Bathroom, 807 sqft

Condo / Townhouse on 0.00 Acres

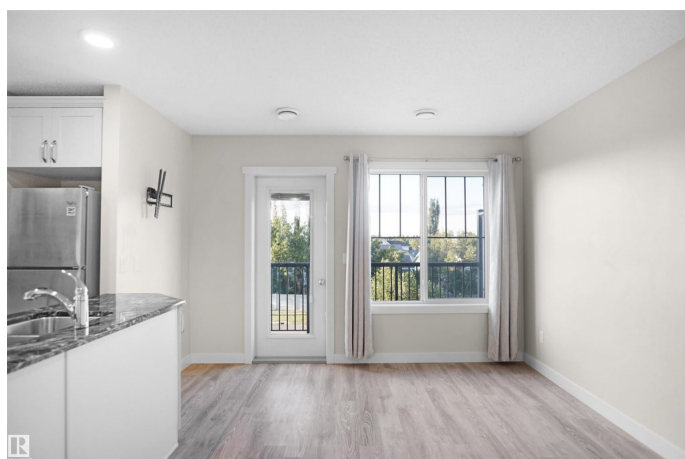
Pembina, Edmonton, AB

Welcome home to this well kept 2-bedroom townhome with a single attached garage and very low affordable condo fee of just \$152 a month. This bright and open condo comes with an upgraded and well equipped kitchen with modern white cabinets and quartz countertops that's open to the living room. Down the hall you will find the enclosed in-suite laundry with full a stacked washer and dryer, a 4-pc bath with quartz countertops. The primary bedroom comes with a walk-in closet and large windows that allow lots of natural light. The second bedroom also has good size windows. This home also includes central air. Convenient visitor parking is available right outside your door and just steps to a convenience store, restaurants, medical clinic, and more. Easy access to Anthony Henday and yellow head trail.

Built in 2015

Essential Information

MLS® #	E4453372
Price	\$269,980
Bedrooms	2
Bathrooms	1.00
Full Baths	1
Square Footage	807
Acres	0.00



Year Built	2015
Type	Condo / Townhouse
Sub-Type	Townhouse
Style	2 Storey
Status	Active

Community Information

Address	4 12815 Cumberland Road
Area	Edmonton
Subdivision	Pembina
City	Edmonton
County	ALBERTA
Province	AB
Postal Code	T6V 0M2

Amenities

Amenities	See Remarks
Parking	Single Garage Attached

Interior

Appliances	Air Conditioning-Central, Dishwasher-Built-In, Refrigerator, Stacked Washer/Dryer, Stove-Electric, Window Coverings
Heating	Forced Air-1, Natural Gas
Stories	2
Has Basement	Yes
Basement	None, No Basement

Exterior

Exterior	Wood, Stone, Vinyl
Exterior Features	Landscaped, Park/Reserve, Playground Nearby, Private Setting, Public Swimming Pool, Public Transportation, Schools, See Remarks
Roof	Asphalt Shingles
Construction	Wood, Stone, Vinyl
Foundation	Concrete Perimeter

Additional Information

Date Listed	August 16th, 2025
Days on Market	7
Zoning	Zone 27

Condo Fee \$152

DATA IS DEEMED RELIABLE BUT IS NOT GUARANTEED ACCURATE BY THE REALTORS® ASSOCIATION OF EDMONTON. COPYRIGHT 2025 BY THE REALTORS® ASSOCIATION OF EDMONTON. ALL RIGHTS RESERVED. Trademarks are owned or controlled by the Canadian Real Estate Association (CREA) and identify real estate professionals who are members of CREA (REALTOR®, REALTORS®) and/or the quality of services they provide (MLS®, Multiple Listing Service®)

Listing information last updated on August 23rd, 2025 at 7:47am MDT