

## \$229,000 - 212 10235 112 Street, Edmonton

MLS® #E4448464

**\$229,000**

2 Bedroom, 2.00 Bathroom, 829 sqft

Condo / Townhouse on 0.00 Acres

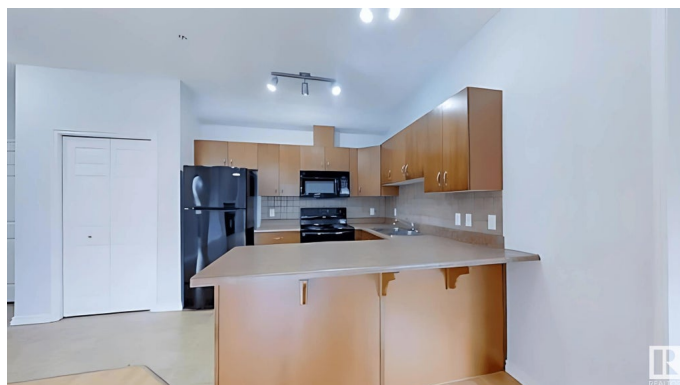
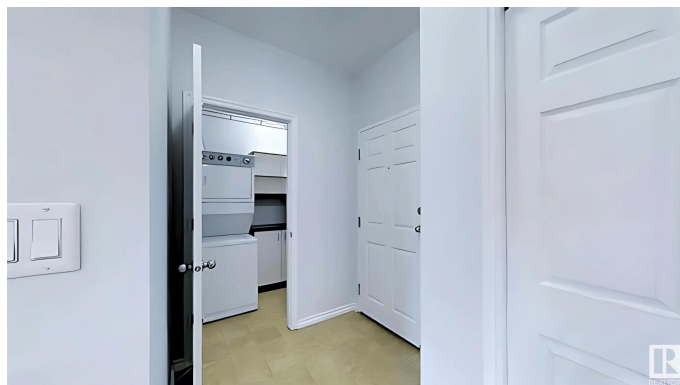
W&#229;hkw&#228;nt&#229;win, Edmonton, AB

Absolutely stunning 2 bed, 2 bath condo in The Imperial, perfectly located off Jasper Ave on 112 St. Steps to coffee shops, restaurants, and downtown amenities with Grandin LRT just 5 min away. Enjoy bright, open living spaces with unobstructed downtown views, concrete & steel construction, updated flooring, in-floor heating, gas fireplace, and a large laundry/storage room. Bedrooms are on opposite sides for privacy; the primary suite features a walkthrough closet and ensuite. Includes a heated titled underground parking stall. The perfect blend of style, comfort, and convenience in the heart of downtown!

Built in 2007

### Essential Information

MLS® #	E4448464
Price	\$229,000
Bedrooms	2
Bathrooms	2.00
Full Baths	2
Square Footage	829
Acres	0.00
Year Built	2007
Type	Condo / Townhouse
Sub-Type	Lowrise Apartment
Style	Single Level Apartment



Status Active

### Community Information

Address 212 10235 112 Street  
Area Edmonton  
Subdivision WÃ©hkwÃ©ntÃ©win  
City Edmonton  
County ALBERTA  
Province AB  
Postal Code T5K 1M7

### Amenities

Amenities Ceiling 9 ft., Guest Suite, No Smoking Home  
Parking Underground

### Interior

Interior Features ensuite bathroom  
Appliances Dishwasher-Built-In, Dryer, Garage Control, Microwave Hood Fan, Refrigerator, Stove-Electric, Washer, Window Coverings  
Heating In Floor Heat System, Natural Gas  
# of Stories 6  
Stories 1  
Has Basement Yes  
Basement Full, See Remarks

### Exterior

Exterior Concrete, Stucco  
Exterior Features Picnic Area, Playground Nearby, Public Swimming Pool, Public Transportation, Schools, Shopping Nearby, View City, View Downtown  
Roof Tar & Gravel  
Construction Concrete, Stucco  
Foundation Concrete Perimeter

### Additional Information

Date Listed July 15th, 2025  
Days on Market 4  
Zoning Zone 12  
Condo Fee \$569

DATA IS DEEMED RELIABLE BUT IS NOT GUARANTEED ACCURATE BY THE REALTORS® ASSOCIATION OF EDMONTON. COPYRIGHT 2025 BY THE REALTORS® ASSOCIATION OF EDMONTON. ALL RIGHTS

RESERVED.Trademarks are owned or controlled by the Canadian Real Estate Association (CREA) and identify real estate professionals who are members of CREA (REALTOR®, REALTORS®) and/or the quality of services they provide (MLS®, Multiple Listing Service®)

Listing information last updated on July 19th, 2025 at 4:32am MDT