

Courtesy Of George M Fahmy Of Mozaic Realty Group

## \$559,800 - 84 Penn Place, Spruce Grove

MLS® #E4448163

**\$559,800**

4 Bedroom, 3.00 Bathroom, 1,741 sqft  
Single Family on 0.00 Acres

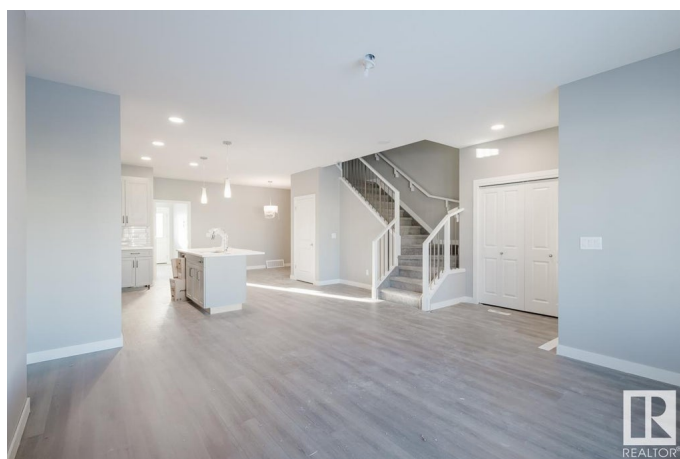
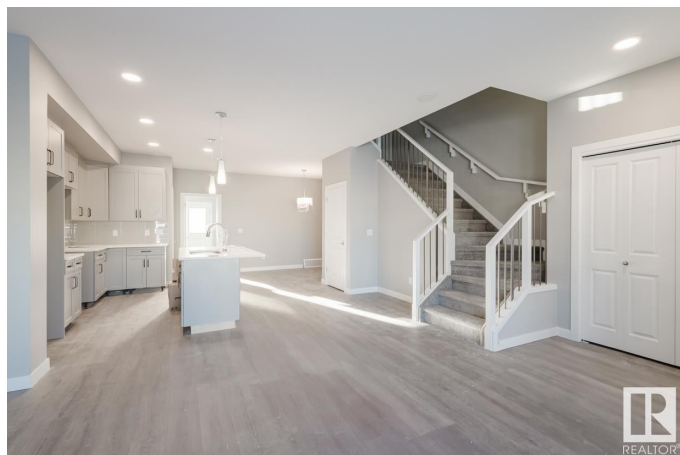
Prescott, Spruce Grove, AB

FULL BED & BATH ON MAIN! Award-winning Crystal Creek Homes presents this stunning two-storey 4 bed, 3 bath detached home in the highly desirable community of Prescott in Spruce Grove. This home offers a perfect blend of modern style and comfort. The open-concept main floor features a spacious living room with fireplace, modern kitchen, pantry, and dining area. The main floor also includes a bedroom and a full bathroom, perfect for guests or additional living space. Upstairs, you'll find a versatile bonus room, convenient walk-in laundry, a 4-piece bathroom, and 3 generously sized bedrooms. The primary suite boasts a walk-in closet and a private ensuite with shower. This home also comes with a \$5,000 appliance credit, a separate side entrance to the basement, and a triple detached garage! Don't miss your opportunity to make it yours. **UNDER CONSTRUCTION!** First 26 photos are of the same model (interior colors differ) rest are of the home.

Built in 2025

### Essential Information

MLS® #	E4448163
Price	\$559,800
Bedrooms	4



Bathrooms	3.00
Full Baths	3
Square Footage	1,741
Acres	0.00
Year Built	2025
Type	Single Family
Sub-Type	Detached Single Family
Style	2 Storey
Status	Active

### Community Information

Address	84 Penn Place
Area	Spruce Grove
Subdivision	Prescott
City	Spruce Grove
County	ALBERTA
Province	AB
Postal Code	T7X 2W7

### Amenities

Amenities	Carbon Monoxide Detectors, Ceiling 9 ft., Detectors Smoke, Vinyl Windows, See Remarks, 9 ft. Basement Ceiling
Parking	Triple Garage Detached
Is Waterfront	Yes

### Interior

Interior Features	ensuite bathroom
Appliances	Garage Control, Garage Opener, See Remarks
Heating	Forced Air-1, Natural Gas
Fireplace	Yes
Fireplaces	Mantel
Stories	2
Has Basement	Yes
Basement	Full, Unfinished

### Exterior

Exterior	Wood, Metal, Stone, Vinyl
Exterior Features	Park/Reserve, Playground Nearby, Schools, Shopping Nearby, Stream/Pond, See Remarks

Roof	Asphalt Shingles
Construction	Wood, Metal, Stone, Vinyl
Foundation	Concrete Perimeter

### **School Information**

Elementary	Prescott Learning Centre
Middle	Prescott Learning Centre

### **Additional Information**

Date Listed	July 14th, 2025
Days on Market	63
Zoning	Zone 91

DATA IS DEEMED RELIABLE BUT IS NOT GUARANTEED ACCURATE BY THE REALTORS® ASSOCIATION OF EDMONTON. COPYRIGHT 2025 BY THE REALTORS® ASSOCIATION OF EDMONTON. ALL RIGHTS RESERVED. Trademarks are owned or controlled by the Canadian Real Estate Association (CREA) and identify real estate professionals who are members of CREA (REALTOR®, REALTORS®) and/or the quality of services they provide (MLS®, Multiple Listing Service®)

Listing information last updated on September 15th, 2025 at 5:32pm MDT