

# **\$599,900 - 422 55109 Hwy 777, Rural Lac Ste. Anne County**

MLS® #E4447844

**\$599,900**

3 Bedroom, 2.00 Bathroom, 1,568 sqft

Rural on 2.87 Acres

Sturgeon Heights\_CLSA, Rural Lac Ste. Anne County, AB

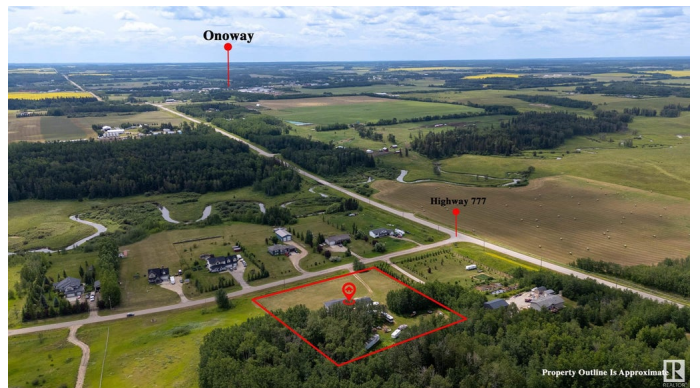
ALL ROADS LEAD TO SERENITY! This beautiful property is ideal for those who crave the peaceful rural lifestyle, while still desiring proximity to services. Enjoy PAVEMENT all the way to your driveway! Upon pulling up to the property, you will appreciate the expansive front yard, timeless curb appeal & ideal blend of open space & trees. This home was lovingly crafted by Northplex & features over 1568 of thoughtfully designed living space. With soaring vaulted ceilings, endless natural light & a layout conducive to all lifestyles, you'll love coming home! The MASSIVE kitchen has pleasing appointments, stainless steel appliances & more counter space than you'll know what to do with. 3 spacious bedrooms & 2 full bathrooms provide you with all the space you'll need. Enjoy the comfort of MAIN FLOOR LAUNDRY! Outside, there is plenty of space for the green thumb, a gigantic wrap-around deck & quick access to the 36x28 HEATED GARAGE! A quick drive & you'll be in Onoway, St Albert, Spruce Grove, Stony Plain or YEG!

Built in 2015

## **Essential Information**

MLS® #

E4447844



Price	\$599,900
Bedrooms	3
Bathrooms	2.00
Full Baths	2
Square Footage	1,568
Acres	2.87
Year Built	2015
Type	Rural
Sub-Type	Detached Single Family
Style	Bungalow
Status	Active

### Community Information

Address	422 55109 Hwy 777
Area	Rural Lac Ste. Anne County
Subdivision	Sturgeon Heights_CLSA
City	Rural Lac Ste. Anne County
County	ALBERTA
Province	AB
Postal Code	T0E 1V0

### Amenities

Features	Deck, No Animal Home, No Smoking Home, Vaulted Ceiling
----------	--

### Interior

Interior Features	ensuite bathroom
Heating	Forced Air-1, Natural Gas
Stories	1
Has Basement	Yes
Basement	None, No Basement

### Exterior

Exterior	Prefab
Exterior Features	Backs Onto Park/Trees, Flat Site, Private Setting, Rolling Land, Schools, Shopping Nearby
Construction	Prefab
Foundation	Insulated Concrete Form

### Additional Information

Date Listed July 15th, 2025

Days on Market 1

Zoning Zone 70

DATA IS DEEMED RELIABLE BUT IS NOT GUARANTEED ACCURATE BY THE REALTORS® ASSOCIATION OF EDMONTON. COPYRIGHT 2025 BY THE REALTORS® ASSOCIATION OF EDMONTON. ALL RIGHTS RESERVED. Trademarks are owned or controlled by the Canadian Real Estate Association (CREA) and identify real estate professionals who are members of CREA (REALTOR®, REALTORS®) and/or the quality of services they provide (MLS®, Multiple Listing Service®)

Listing information last updated on July 16th, 2025 at 2:03pm MDT