

## \$359,707 - 290 Vantage Lane, Sherwood Park

MLS® #E4447612

**\$359,707**

4 Bedroom, 1.50 Bathroom, 1,202 sqft

Single Family on 0.00 Acres

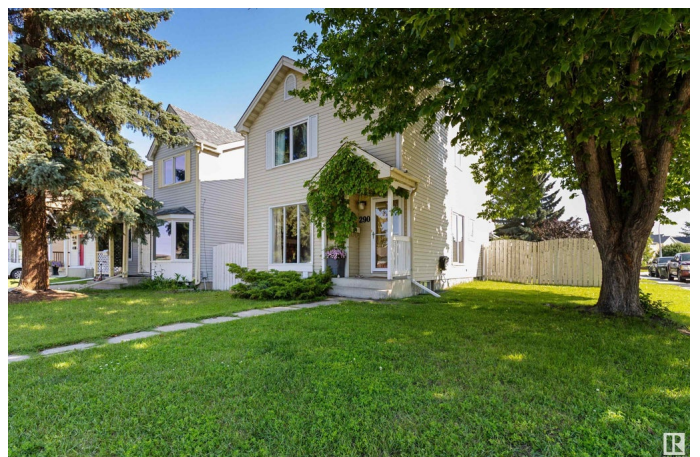
Village on the Lake, Sherwood Park, AB

PERFECT FIRST HOME OR INVESTMENT PROPERTY! Tucked away in a quiet location in Village on The Lake, and close to wonderful amenities! CORNER LOT, lovely fenced backyard with gate, shed and parking pad. Very bright and cheery home offering a spacious front living room, laminate flooring and an open dining area. Lovely kitchen with all appliances including a newer stove and newer dishwasher. Upstairs are 3 bedrooms and an updated 4 piece bathroom. The large Primary Bedroom has his & hers closets. The basement offers a family room with pot lighting and storage space. NEWER SHINGLES (2020), newer CENTRAL AIR-CONDITIONING (2020) and NEWER WINDOWS (2018) in 2 bedrooms and in 2 bathrooms. Excellent value and location! Visit REALTOR® website for more information.

Built in 1980

### Essential Information

MLS® #	E4447612
Price	\$359,707
Bedrooms	4
Bathrooms	1.50
Full Baths	1
Half Baths	1
Square Footage	1,202



Acres	0.00
Year Built	1980
Type	Single Family
Sub-Type	Detached Single Family
Style	2 Storey
Status	Active

### Community Information

Address	290 Vantage Lane
Area	Sherwood Park
Subdivision	Village on the Lake
City	Sherwood Park
County	ALBERTA
Province	AB
Postal Code	T8A 4J2

### Amenities

Amenities	Deck
Parking	Stall

### Interior

Appliances	Air Conditioning-Central, Dishwasher-Built-In, Dryer, Hood Fan, Refrigerator, Storage Shed, Stove-Electric, Washer, Window Coverings, TV Wall Mount
Heating	Forced Air-1, Natural Gas
Stories	3
Has Basement	Yes
Basement	Full, Finished

### Exterior

Exterior	Wood, Vinyl
Exterior Features	Playground Nearby, Public Transportation, Schools, Shopping Nearby
Roof	Asphalt Shingles
Construction	Wood, Vinyl
Foundation	Concrete Perimeter

### Additional Information

Date Listed	July 14th, 2025
Days on Market	4

## Zoning

## Zone 25

DATA IS DEEMED RELIABLE BUT IS NOT GUARANTEED ACCURATE BY THE REALTORS® ASSOCIATION OF EDMONTON. COPYRIGHT 2025 BY THE REALTORS® ASSOCIATION OF EDMONTON. ALL RIGHTS RESERVED. Trademarks are owned or controlled by the Canadian Real Estate Association (CREA) and identify real estate professionals who are members of CREA (REALTOR®, REALTORS®) and/or the quality of services they provide (MLS®, Multiple Listing Service®)

Listing information last updated on July 18th, 2025 at 1:02am MDT