

## \$399,800 - 14803 129 Street, Edmonton

MLS® #E4446201

**\$399,800**

4 Bedroom, 2.50 Bathroom, 1,795 sqft

Single Family on 0.00 Acres

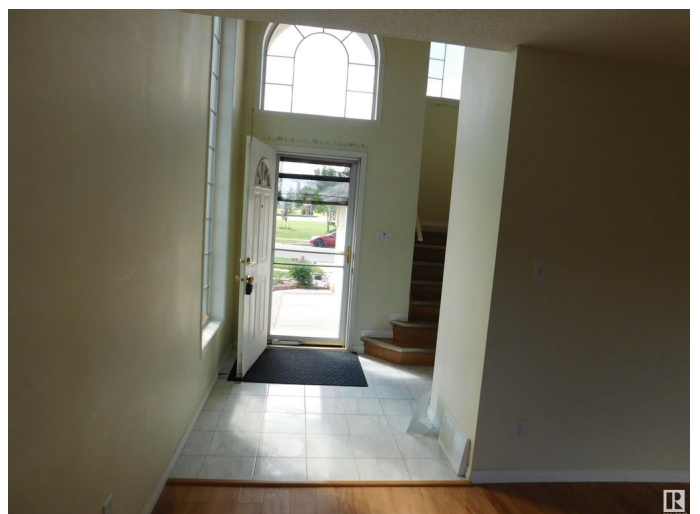
Cumberland, Edmonton, AB

**Priced to SELL !! FORMER SHOWHOME !!**  
Welcome to this 2 storey East Facing house that boasts approx. 1800 sqft with Open to Above upon entry. Featuring 3+1 Bedrooms and 2.5 bathrooms. Front attached garage office (former showhome office). An open concept main floor living room greets you as you walk through the front door. Bright dining nook with garden door opening to deck. Functional kitchen design with loads of cabinets and counter space adjacent to a mud room and a half bath. The second floor offers three spacious bedrooms; one full bath; and work desk space! Basement is fully finished with 1 bedroom, 1 bright open family room and 1 full bath. An original owner with little Love and Care this property and become the best investment youâ€™ve ever done. At this price, it offers everything your growing family needs! Close to great shopping, restaurants, YMCA and parks, schools and churches!

Built in 1996

### Essential Information

MLS® #	E4446201
Price	\$399,800
Bedrooms	4
Bathrooms	2.50
Full Baths	2



Half Baths	1
Square Footage	1,795
Acres	0.00
Year Built	1996
Type	Single Family
Sub-Type	Detached Single Family
Style	2 Storey
Status	Active

### **Community Information**

Address	14803 129 Street
Area	Edmonton
Subdivision	Cumberland
City	Edmonton
County	ALBERTA
Province	AB
Postal Code	T6V 1C4

### **Amenities**

Amenities	Deck, Hot Water Natural Gas, No Animal Home, No Smoking Home, Vinyl Windows
Parking Spaces	2
Parking	Double Garage Attached, See Remarks

### **Interior**

Appliances	Dishwasher-Built-In, Dryer, Hood Fan, Refrigerator, Storage Shed, Stove-Electric, Washer, Window Coverings
Heating	Forced Air-1, Natural Gas
Stories	3
Has Basement	Yes
Basement	Full, Finished

### **Exterior**

Exterior	Wood, Stucco
Exterior Features	Commercial, Corner Lot, Flat Site, Landscaped, Park/Reserve, Playground Nearby, Public Transportation, Schools, Shopping Nearby, Partially Fenced
Roof	Asphalt Shingles
Construction	Wood, Stucco

Foundation                      Concrete Perimeter

**Additional Information**

Date Listed                      July 6th, 2025

Days on Market                1

Zoning                            Zone 27

DATA IS DEEMED RELIABLE BUT IS NOT GUARANTEED ACCURATE BY THE REALTORS® ASSOCIATION OF EDMONTON. COPYRIGHT 2025 BY THE REALTORS® ASSOCIATION OF EDMONTON. ALL RIGHTS RESERVED.Trademarks are owned or controlled by the Canadian Real Estate Association (CREA) and identify real estate professionals who are members of CREA (REALTOR®, REALTORS®) and/or the quality of services they provide (MLS®, Multiple Listing Service®)

Listing information last updated on July 7th, 2025 at 3:17am MDT