

## \$239,000 - 18525 66 Avenue, Edmonton

MLS® #E4446199

**\$239,000**

4 Bedroom, 2.50 Bathroom, 979 sqft

Condo / Townhouse on 0.00 Acres

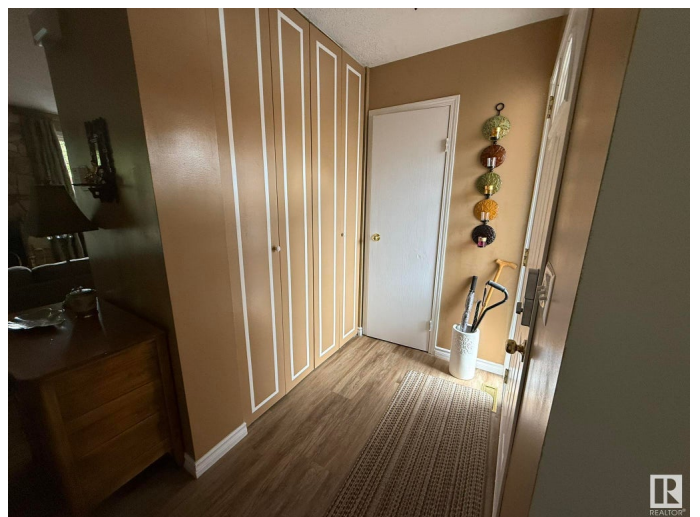
Ormsby Place, Edmonton, AB

**\*\*Beautifully Maintained Two-Story Townhome in West End\*\*** This spacious and well-cared-for townhome is ideally located in the desirable West End, close to all essential amenities. Featuring **\*\*3+1 bedrooms\*\***, **\*\*2.5 bathrooms\*\***, and **\*\*two full kitchens\*\***, it offers exceptional flexibility for families. Enjoy cozy evenings by the **\*\*wood-burning fireplace\*\***, or step outside to a **\*\*private backyard\*\*** that backs onto peaceful green space—perfect for relaxing or entertaining. Additional highlights include: - **\*\*Reasonable condo fees\*\*** - **\*\*Two outdoor parking stalls\*\*** - A layout that balances comfort, privacy, and convenience Donâ€™t miss the opportunity to own this versatile and inviting home in a prime location!

Built in 1978

### Essential Information

MLS® #	E4446199
Price	\$239,000
Bedrooms	4
Bathrooms	2.50
Full Baths	2
Half Baths	1
Square Footage	979
Acres	0.00
Year Built	1978



Type	Condo / Townhouse
Sub-Type	Townhouse
Style	2 Storey
Status	Active

### Community Information

Address	18525 66 Avenue
Area	Edmonton
Subdivision	Ormsby Place
City	Edmonton
County	ALBERTA
Province	AB
Postal Code	T5T 2M3

### Amenities

Amenities	No Animal Home
Parking Spaces	2
Parking	Single Carport, Stall

### Interior

Appliances	Dishwasher-Built-In, Dryer, Microwave Hood Fan, Washer, Refrigerators-Two, Stoves-Two
Heating	Forced Air-1, Natural Gas
Fireplace	Yes
Fireplaces	Brick Facing
Stories	3
Has Suite	Yes
Has Basement	Yes
Basement	Full, Finished

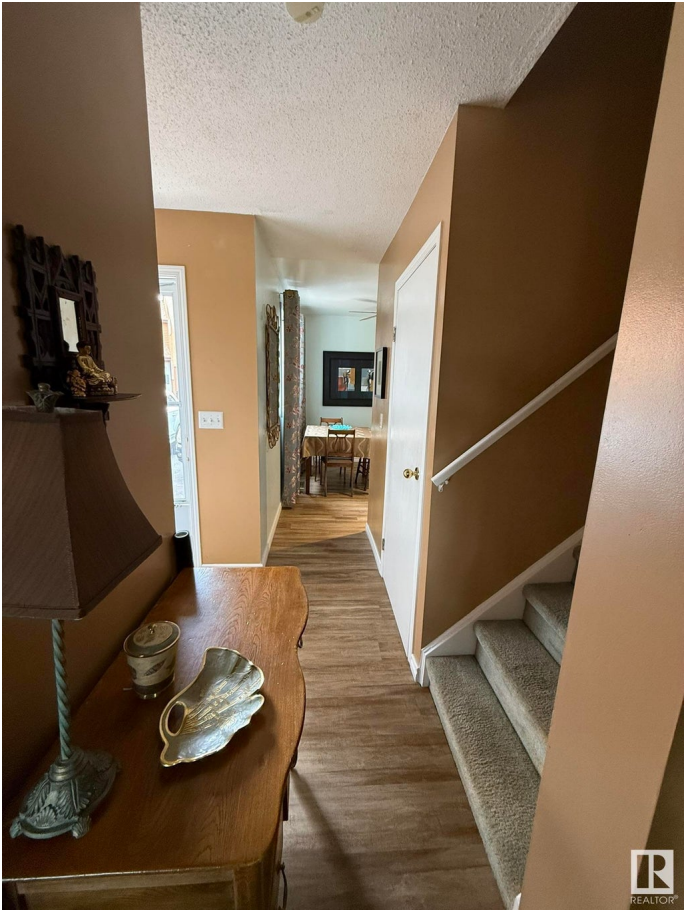
### Exterior

Exterior	Wood
Exterior Features	Fenced, Landscaped, Low Maintenance Landscape, Schools
Roof	Asphalt Shingles
Construction	Wood
Foundation	Concrete Perimeter

### Additional Information

Date Listed	July 6th, 2025
-------------	----------------

Days on Market 11  
Zoning Zone 20  
Condo Fee \$412



DATA IS DEEMED RELIABLE BUT IS NOT GUARANTEED ACCURATE BY THE REALTORS® ASSOCIATION OF EDMONTON. COPYRIGHT 2025 BY THE REALTORS® ASSOCIATION OF EDMONTON. ALL RIGHTS RESERVED.Trademarks are owned or controlled by the Canadian Real Estate Association (CREA) and identify real estate professionals who are members of CREA (REALTOR®, REALTORS®) and/or the quality of services they provide (MLS®, Multiple Listing Service®)  
Listing information last updated on July 17th, 2025 at 9:02pm MDT