

## \$285,000 - 109 10221 111 Street, Edmonton

MLS® #E4445480

**\$285,000**

2 Bedroom, 2.00 Bathroom, 1,160 sqft

Condo / Townhouse on 0.00 Acres

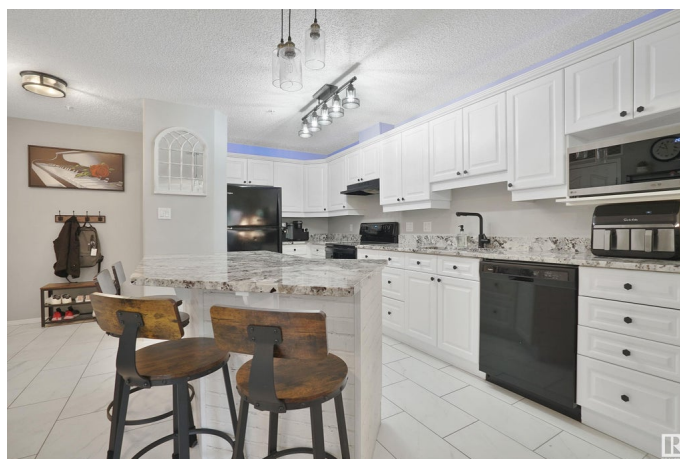
Downtown (Edmonton), Edmonton, AB

Welcome to Railtown Estates, a professionally managed, pet-friendly condo in the heart of Downtown Edmonton. Visit the REALTOR®'s website for more information. This spacious main-floor unit has a large, bright floor-plan & is the example refreshed, low-maintenance lifestyle with 2 bedrooms, 2 bathrooms, large windows, fresh paint, new appliances, outdoor patio & a covered parking stall. There's even a gas fireplace! All this & affordable condo fees?! Enjoy adult living without the noise of children (18+), steps from Grant MacEwan, with easy access to transit, shopping, & some of the best restaurants Edmonton has to offer. Walk to the Ice District to catch world-class events including concerts & hockey or just enjoy the dining, & nightlife. There's also outdoor fun in the Edmonton River Valley with golf, mountain biking, & scenic trails. Whether you're downsizing or upgrading your lifestyle, this is urban living done right—quiet, convenient, and connected

Built in 2001

### Essential Information

MLS® #	E4445480
Price	\$285,000
Bedrooms	2
Bathrooms	2.00



Full Baths	2
Square Footage	1,160
Acres	0.00
Year Built	2001
Type	Condo / Townhouse
Sub-Type	Lowrise Apartment
Style	Single Level Apartment
Status	Active

### **Community Information**

Address	109 10221 111 Street
Area	Edmonton
Subdivision	Downtown (Edmonton)
City	Edmonton
County	ALBERTA
Province	AB
Postal Code	T5K 2W5

### **Amenities**

Amenities	Off Street Parking, Exercise Room, Guest Suite, Parking-Visitor, Smart/Program. Thermostat, Social Rooms
Parking Spaces	1
Parking	Stall

### **Interior**

Interior Features	ensuite bathroom
Appliances	Dishwasher-Built-In, Dryer, Hood Fan, Refrigerator, Stove-Electric, Washer, Window Coverings, See Remarks
Heating	Forced Air-1, Natural Gas
Fireplace	Yes
Fireplaces	Mantel, Tile Surround
# of Stories	5
Stories	1
Has Basement	Yes
Basement	None, No Basement

### **Exterior**

Exterior	Wood, Vinyl
Exterior Features	No Through Road, Public Transportation, Schools, View Downtown

Roof	Asphalt Shingles
Construction	Wood, Vinyl
Foundation	Concrete Perimeter

**School Information**

Elementary	W&hkw&nt&win School
Middle	Westminster School
High	Victoria School

**Additional Information**

Date Listed	July 3rd, 2025
Days on Market	3
Zoning	Zone 12
Condo Fee	\$538

DATA IS DEEMED RELIABLE BUT IS NOT GUARANTEED ACCURATE BY THE REALTORS® ASSOCIATION OF EDMONTON. COPYRIGHT 2025 BY THE REALTORS® ASSOCIATION OF EDMONTON. ALL RIGHTS RESERVED.Trademarks are owned or controlled by the Canadian Real Estate Association (CREA) and identify real estate professionals who are members of CREA (REALTOR®, REALTORS®) and/or the quality of services they provide (MLS®, Multiple Listing Service®)

Listing information last updated on July 6th, 2025 at 4:47am MDT