

## \$619,900 - 408 Davenport Drive, Sherwood Park

MLS® #E4444651

**\$619,900**

5 Bedroom, 3.00 Bathroom, 1,691 sqft

Single Family on 0.00 Acres

Clarkdale Meadows, Sherwood Park, AB

GORGEOUS Bi-Level (1691 sq. ft.) with a Grand entrance introduces you to Hardwood and Ceramic which accentuates this beautiful Executive Bi Level home in Clarkdale Meadows. Main floor features vaulted ceilings, full of light and space, Large living and dining room, 2 bedrooms, full bathroom and bright open kitchen with newer S.S. appliances, large island and pantry. Upper floor features Huge master bedroom with walk-in closet and full bathroom. Basement has 2 more bedrooms, 9' ceiling, full bathroom and laundry room. Hot water tank (Bradford White - 50 gal), Central A/C for Summer days, Water softening system, H/E Furnace(2024), 2yr old shingles, composite decking maintenance free, and so much more! The 22x24 over sided Double Garage is insulated, with 3 separate 120v circuits -also wiring for 240v 50a. Yard is fully fenced and landscaped with fruit trees and Shrubs, garden and complete with 12.5'x15' deck. Perfect location, just a short walking distance to parks, School, and transit.

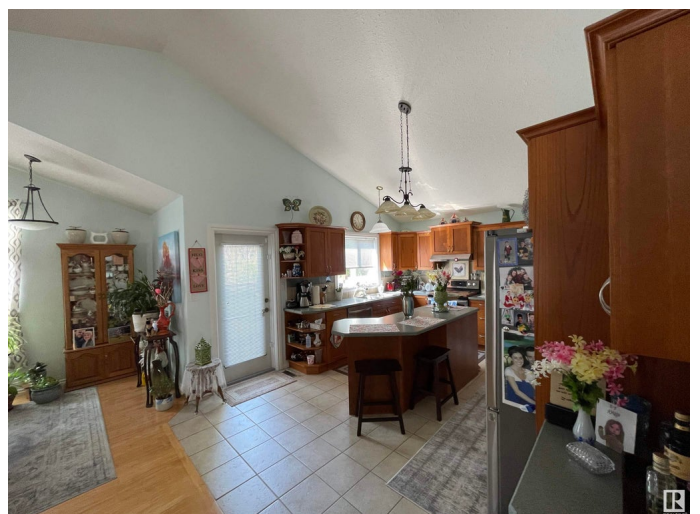
Built in 2001

### Essential Information

MLS® # E4444651

Price \$619,900

Bedrooms 5



Bathrooms	3.00
Full Baths	3
Square Footage	1,691
Acres	0.00
Year Built	2001
Type	Single Family
Sub-Type	Detached Single Family
Style	Bi-Level
Status	Active

### Community Information

Address	408 Davenport Drive
Area	Sherwood Park
Subdivision	Clarkdale Meadows
City	Sherwood Park
County	ALBERTA
Province	AB
Postal Code	T8H 2E6

### Amenities

Amenities	Air Conditioner, Deck, Detectors Smoke, Hot Water Natural Gas, No Animal Home, No Smoking Home, Vaulted Ceiling, Vinyl Windows, 9 ft. Basement Ceiling
Parking Spaces	4
Parking	Double Garage Attached, Insulated, Over Sized

### Interior

Interior Features	ensuite bathroom
Appliances	Air Conditioning-Central, Alarm/Security System, Dishwasher-Built-In, Dryer, Garage Control, Garage Opener, Hood Fan, Humidifier-Power(Furnace), Refrigerator, Stove-Electric, Washer, Water Softener, Window Coverings
Heating	Forced Air-1, Natural Gas
Fireplace	Yes
Fireplaces	Marble Surround, Oak Surround
Stories	3
Has Basement	Yes
Basement	Full, Finished

### Exterior

Exterior	Wood, Brick, Vinyl
Exterior Features	Fenced, Fruit Trees/Shrubs, Landscaped, No Back Lane, Park/Reserve, Playground Nearby, Public Swimming Pool, Public Transportation, Schools, Shopping Nearby, Vegetable Garden
Roof	Asphalt Shingles
Construction	Wood, Brick, Vinyl
Foundation	Concrete Perimeter

**Additional Information**

Date Listed	June 27th, 2025
Days on Market	4
Zoning	Zone 25

DATA IS DEEMED RELIABLE BUT IS NOT GUARANTEED ACCURATE BY THE REALTORS® ASSOCIATION OF EDMONTON. COPYRIGHT 2025 BY THE REALTORS® ASSOCIATION OF EDMONTON. ALL RIGHTS RESERVED.Trademarks are owned or controlled by the Canadian Real Estate Association (CREA) and identify real estate professionals who are members of CREA (REALTOR®, REALTORS®) and/or the quality of services they provide (MLS®, Multiple Listing Service®)

Listing information last updated on July 1st, 2025 at 9:47am MDT