

\$349,900 - 12312 82 Street, Edmonton

MLS® #E4443677

\$349,900

8 Bedroom, 2.00 Bathroom, 1,279 sqft

Single Family on 0.00 Acres

Eastwood, Edmonton, AB

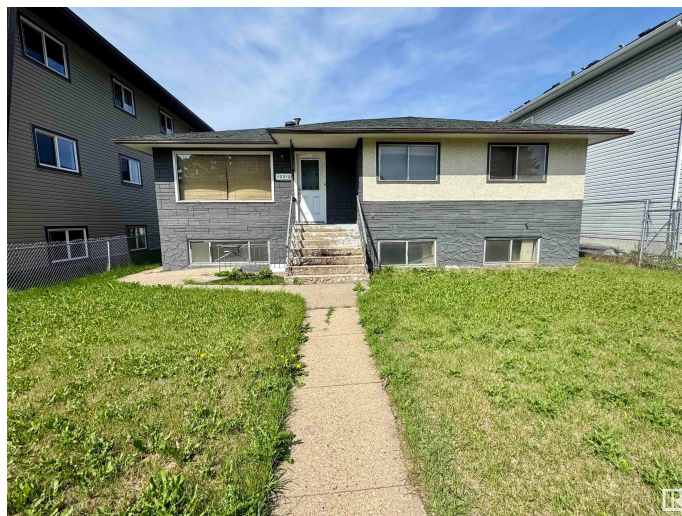
Investor Alert! Situated on a huge lot with and a double detached garage, this property is perfect for those looking to renovate or redevelop. With redevelopment happening all around, Eastwood is a vibrant and growing community with loads of upside. This bi-level has both front and rear access to both levels. This home was in the process of being renovated, however due to the change in plan the seller was unable to complete the renovation. 4 Bedrooms on the main floor and 4 bedrooms in the basement along with second kitchen in the basement. CLOSE TO ALL AMENITIES, SCHOOLS, MAJOR BUS ROUTES, GROCERY STORES & RESTAURANTS, MEDICAL SERVICES.

Please note property is sold as is where is at time of possession. No warranties or representations. All appliances sold "as is".

Built in 1961

Essential Information

| | |
|----------------|-----------|
| MLS® # | E4443677 |
| Price | \$349,900 |
| Bedrooms | 8 |
| Bathrooms | 2.00 |
| Full Baths | 2 |
| Square Footage | 1,279 |
| Acres | 0.00 |



| | |
|------------|------------------------|
| Year Built | 1961 |
| Type | Single Family |
| Sub-Type | Detached Single Family |
| Style | Bi-Level |
| Status | Active |

Community Information

| | |
|-------------|-----------------|
| Address | 12312 82 Street |
| Area | Edmonton |
| Subdivision | Eastwood |
| City | Edmonton |
| County | ALBERTA |
| Province | AB |
| Postal Code | T5B 2X2 |

Amenities

| | |
|-----------|--|
| Amenities | On Street Parking, No Animal Home, No Smoking Home |
| Parking | Double Garage Detached |

Interior

| | |
|--------------|---------------------------|
| Appliances | See Remarks |
| Heating | Forced Air-1, Natural Gas |
| Stories | 2 |
| Has Basement | Yes |
| Basement | Full, Partially Finished |

Exterior

| | |
|-------------------|---|
| Exterior | Wood, Stucco |
| Exterior Features | Back Lane, Fenced, Landscaped, Playground Nearby, Public Transportation, Schools, Shopping Nearby |
| Roof | Asphalt Shingles |
| Construction | Wood, Stucco |
| Foundation | Concrete Perimeter |

Additional Information

| | |
|----------------|-----------------|
| Date Listed | June 21st, 2025 |
| Days on Market | 16 |
| Zoning | Zone 05 |

DATA IS DEEMED RELIABLE BUT IS NOT GUARANTEED ACCURATE BY THE REALTORS® ASSOCIATION OF

EDMONTON. COPYRIGHT 2025 BY THE REALTORS® ASSOCIATION OF EDMONTON. ALL RIGHTS RESERVED.Trademarks are owned or controlled by the Canadian Real Estate Association (CREA) and identify real estate professionals who are members of CREA (REALTOR®, REALTORS®) and/or the quality of services they provide (MLS®, Multiple Listing Service®)

Listing information last updated on July 7th, 2025 at 3:02am MDT