

\$3,200 - 351 Bulyea Road, Edmonton

MLS® #E4443126

\$3,200

7 Bedroom, 3.50 Bathroom, 2,630 sqft

Rental on 0.00 Acres

Bulyea Heights, Edmonton, AB

Former Show Home and 2631 sq ft plus 1300 square feet fully finished basement. Custom Walnut hardwood floors with Maple inlay, custom Maple cabinets with black pearl granite countertops, fully finished 5 bedroom(7 BEDROOM POTENTIAL) 2 story in Brookview. Main floor has two traditional style living and dining rooms, main floor den, large kitchen with slate floors and black pearl granite countertops. Oversized cedar deck with large backyard in the subdivision. Walnut stairs lead upstairs to 4 beautiful bedrooms & 2 full washrooms. Master bedroom has walk in closet and 4 piece master en-suite with jet tub and his and her sinks. Central bathroom features modern amenities with tub, shower, modern one piece toilet & lighting. Convenient upstairs laundry with brand new washer & dryer & custom maple cabinets. Lower level recently updated with LVT flooring large rumpus room 3 bedrooms extra potential, one full 3 piece bath. TOP Schools in the District Area-George H.Locke

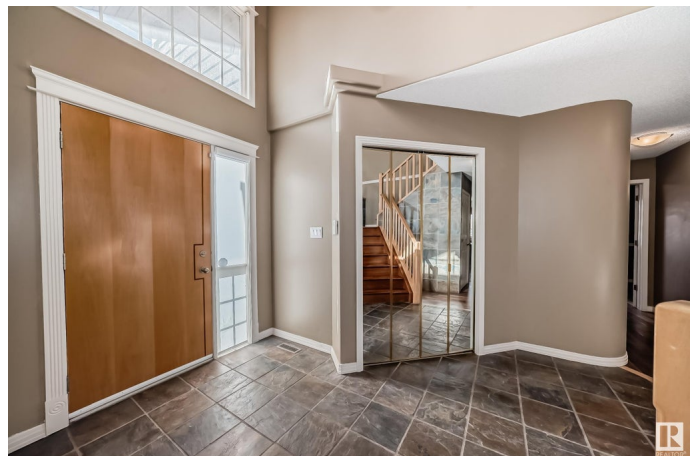
Built in 1989

Essential Information

MLS® # E4443126

Price \$3,200

Bedrooms 7



| | |
|----------------|----------|
| Bathrooms | 3.50 |
| Full Baths | 3 |
| Half Baths | 1 |
| Square Footage | 2,630 |
| Acres | 0.00 |
| Year Built | 1989 |
| Type | Rental |
| Style | 2 Storey |
| Status | Active |

Community Information

| | |
|-------------|-----------------|
| Address | 351 Bulyea Road |
| Area | Edmonton |
| Subdivision | Bulyea Heights |
| City | Edmonton |
| County | ALBERTA |
| Province | AB |
| Postal Code | T6R 2B1 |

Amenities

| | |
|---------|------------------------|
| Parking | Double Garage Attached |
|---------|------------------------|

Interior

| | |
|------------|--|
| Appliances | Dishwasher-Built-In, Dryer, Refrigerator, Stove-Electric, Washer |
|------------|--|

Additional Information

| | |
|----------------|-----------------|
| Date Listed | June 19th, 2025 |
| Days on Market | 6 |
| Zoning | Zone 14 |

DATA IS DEEMED RELIABLE BUT IS NOT GUARANTEED ACCURATE BY THE REALTORS® ASSOCIATION OF EDMONTON. COPYRIGHT 2025 BY THE REALTORS® ASSOCIATION OF EDMONTON. ALL RIGHTS RESERVED. Trademarks are owned or controlled by the Canadian Real Estate Association (CREA) and identify real estate professionals who are members of CREA (REALTOR®, REALTORS®) and/or the quality of services they provide (MLS®, Multiple Listing Service®)

Listing information last updated on June 25th, 2025 at 11:02am MDT