

\$635,000 - 55227 Rge Road 33, Rural Lac Ste. Anne County

MLS® #E4442682

\$635,000

4 Bedroom, 2.50 Bathroom, 1,933 sqft

Rural on 9.88 Acres

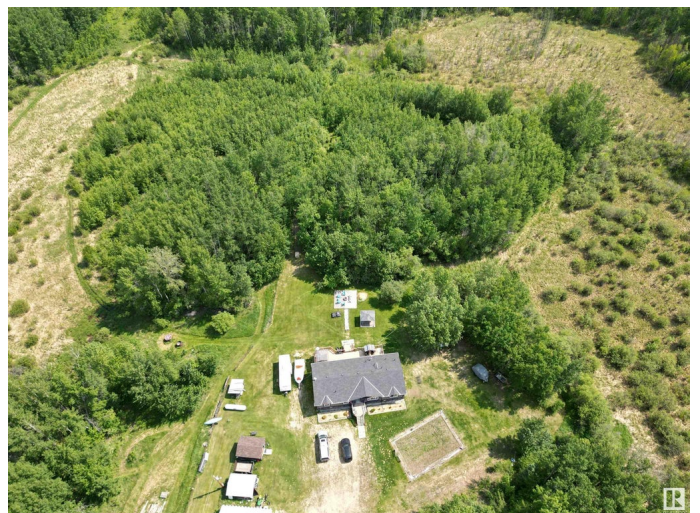
None, Rural Lac Ste. Anne County, AB

Peaceful Country Lifestyle â€” 4-Bed Home on 9.9 Acres Live the quiet country lifestyle just 15 mins from Onoway. This 4-bed, 2.5-bath Jandel Modular (2018) sits on 9.9 private acresâ€”perfect for nature lovers, hobby farmers, and outdoor enthusiasts. Relax on the large back deck, watching wildlife by day and stars by night. Inside, enjoy a stylish kitchen with quartz counters, gas stove, beverage bar, and huge pantry. Central A/C, steel piling foundation, crawlspace, and insulated skirting add comfort and peace of mind. 900 sq. ft. shop/garage with reinforced slab fits your gear and projects. Fully fenced and cross-fenced. Backs onto Crown land and just 3 km to Yellowstone boat launch on Lac Ste. Anne. NEW, FULLY PERMITTED SEPTIC JUST INSTALLED (\$20k value!)

Built in 2018

Essential Information

MLS® #	E4442682
Price	\$635,000
Bedrooms	4
Bathrooms	2.50
Full Baths	2
Half Baths	1



Square Footage	1,933
Acres	9.88
Year Built	2018
Type	Rural
Sub-Type	Detached Single Family
Style	Bungalow
Status	Active

Community Information

Address	55227 Rge Road 33
Area	Rural Lac Ste. Anne County
Subdivision	None
City	Rural Lac Ste. Anne County
County	ALBERTA
Province	AB
Postal Code	T0E 1A0

Amenities

Features	Off Street Parking, Air Conditioner, Ceiling 9 ft., Closet Organizers, Crawl Space, No Smoking Home, R.V. Storage, Vaulted Ceiling, Workshop
Parking Spaces	10

Interior

Interior Features	ensuite bathroom
Heating	Forced Air-1, Propane
Stories	1
Has Basement	Yes
Basement	None, No Basement

Exterior

Exterior	Wood
Exterior Features	Backs Onto Park/Trees, Cross Fenced, Landscaped, No Through Road, Park/Reserve, Private Setting, Recreation Use, Schools, Treed Lot, Vegetable Garden, See Remarks
Construction	Wood
Foundation	Piling

Additional Information

Date Listed	June 16th, 2025
-------------	-----------------

Days on Market 2

Zoning Zone 70

DATA IS DEEMED RELIABLE BUT IS NOT GUARANTEED ACCURATE BY THE REALTORS® ASSOCIATION OF EDMONTON. COPYRIGHT 2025 BY THE REALTORS® ASSOCIATION OF EDMONTON. ALL RIGHTS RESERVED. Trademarks are owned or controlled by the Canadian Real Estate Association (CREA) and identify real estate professionals who are members of CREA (REALTOR®, REALTORS®) and/or the quality of services they provide (MLS®, Multiple Listing Service®)

Listing information last updated on June 18th, 2025 at 3:17am MDT