

# \$645,000 - 54215 Rge Rd 13, Rural Lac Ste. Anne County

MLS® #E4441294

**\$645,000**

0 Bedroom, 0.00 Bathroom,  
Rural on 125.00 Acres

None, Rural Lac Ste. Anne County, AB

RETREAT to the country & BUILD YOUR DREAM HOME! Private 125 acres, only 15 mins north west of Stony Plain desirably located in a quiet area with low traffic. Rolling hills & high/dry land makes it the perfect location to build your dream house, start a hobby farm or simply enjoy the tranquility of the space & it's private setting. GST applicable & Not Included in the asking price\*\*

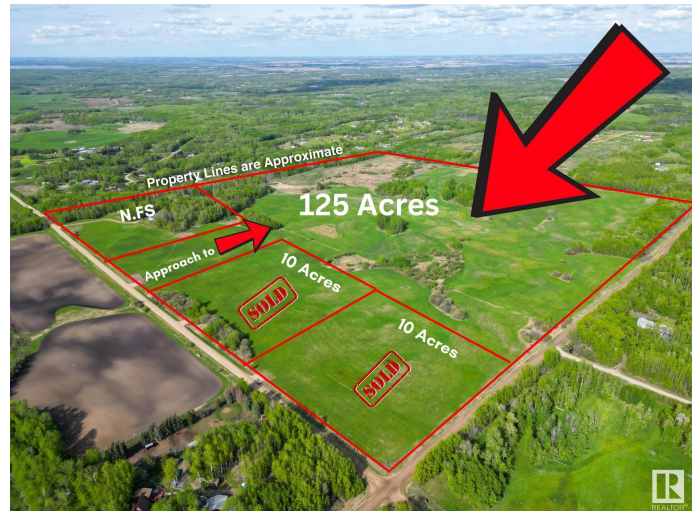
Built in 1978

## Essential Information

MLS® #	E4441294
Price	\$645,000
Bathrooms	0.00
Acres	125.00
Year Built	1978
Type	Rural
Sub-Type	Vacant Lot/Land
Status	Active

## Community Information

Address	54215 Rge Rd 13
Area	Rural Lac Ste. Anne County
Subdivision	None
City	Rural Lac Ste. Anne County



County                   ALBERTA  
Province                AB  
Postal Code            T0E 1V2

**Exterior**

Exterior Features    Level Land, Not Fenced, Private Setting, Rolling Land, See Remarks

**Additional Information**

Date Listed            June 9th, 2025  
Days on Market        9  
Zoning                  Zone 70

DATA IS DEEMED RELIABLE BUT IS NOT GUARANTEED ACCURATE BY THE REALTORS® ASSOCIATION OF EDMONTON. COPYRIGHT 2025 BY THE REALTORS® ASSOCIATION OF EDMONTON. ALL RIGHTS RESERVED.Trademarks are owned or controlled by the Canadian Real Estate Association (CREA) and identify real estate professionals who are members of CREA (REALTOR®, REALTORS®) and/or the quality of services they provide (MLS®, Multiple Listing Service®)  
Listing information last updated on June 18th, 2025 at 2:17am MDT