

## \$215,000 - 425 5370 Chappelle Road, Edmonton

MLS® #E4440895

**\$215,000**

2 Bedroom, 2.00 Bathroom, 766 sqft

Condo / Townhouse on 0.00 Acres

Chappelle Area, Edmonton, AB

This spacious top-floor corner unit is located in the heart of Chappelle in a very safe and secure building, steps from scenic greenbelts, walking trails, and a beautiful pond system. Featuring 2 bedrooms, 2 full baths, and an open den, this suite is fully upgraded throughout. Enjoy granite countertops, glass mosaic backsplash, dark wood cabinetry, and stainless steel appliances including a fridge, stove, dishwasher, and over-the-range microwave. The main bath includes stacked in-suite laundry, and both bathrooms feature deep soaker tubs with elegant tile surrounds and mosaic accents. Additional upgrades include air conditioning, designer lighting, 2" white faux wood blinds, tile flooring in the kitchen, entry, and baths, and plush carpet in the living areas and bedrooms. Relax on the large NW-facing balcony with unobstructed views. Comes with titled underground parking and a private storage unit. Move-in ready and beautifully finished! Virtually Staged



Built in 2016

### Essential Information

MLS® #	E4440895
Price	\$215,000
Bedrooms	2
Bathrooms	2.00

Full Baths	2
Square Footage	766
Acres	0.00
Year Built	2016
Type	Condo / Townhouse
Sub-Type	Lowrise Apartment
Style	Single Level Apartment
Status	Active

### Community Information

Address	425 5370 Chappelle Road
Area	Edmonton
Subdivision	Chappelle Area
City	Edmonton
County	ALBERTA
Province	AB
Postal Code	T6W 3L7

### Amenities

Amenities	Air Conditioner, Deck, No Smoking Home, Vinyl Windows
Parking	Underground

### Interior

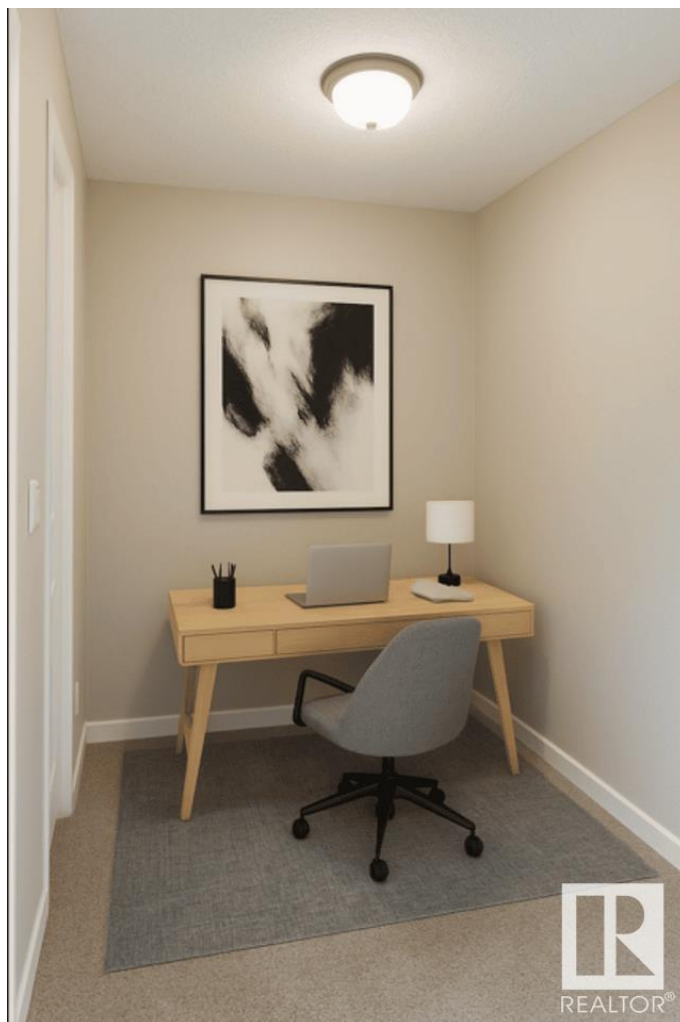
Interior Features	ensuite bathroom
Appliances	Dishwasher-Built-In, Fan-Ceiling, Garage Opener, Microwave Hood Fan, Refrigerator, Stacked Washer/Dryer, Stove-Electric
Heating	Baseboard, Natural Gas, Water
# of Stories	4
Stories	1
Has Basement	Yes
Basement	None, See Remarks

### Exterior

Exterior	Wood, Stone, Vinyl
Exterior Features	Airport Nearby, Playground Nearby, Schools, Shopping Nearby, See Remarks
Roof	Asphalt Shingles
Construction	Wood, Stone, Vinyl
Foundation	Concrete Perimeter

## Additional Information

Date Listed	June 6th, 2025
Days on Market	12
Zoning	Zone 55
HOA Fees	52.5
HOA Fees Freq.	Annually
Condo Fee	\$438



DATA IS DEEMED RELIABLE BUT IS NOT GUARANTEED ACCURATE BY THE REALTORS® ASSOCIATION OF EDMONTON. COPYRIGHT 2025 BY THE REALTORS® ASSOCIATION OF EDMONTON. ALL RIGHTS RESERVED. Trademarks are owned or controlled by the Canadian Real Estate Association (CREA) and identify real estate professionals who are members of CREA (REALTOR®, REALTORS®) and/or the quality of services they provide (MLS®, Multiple Listing Service®)

Listing information last updated on June 18th, 2025 at 8:17am MDT