

\$550,000 - 950 Ormsby Wynd, Edmonton

MLS® #E4440398

\$550,000

4 Bedroom, 4.00 Bathroom, 1,636 sqft

Single Family on 0.00 Acres

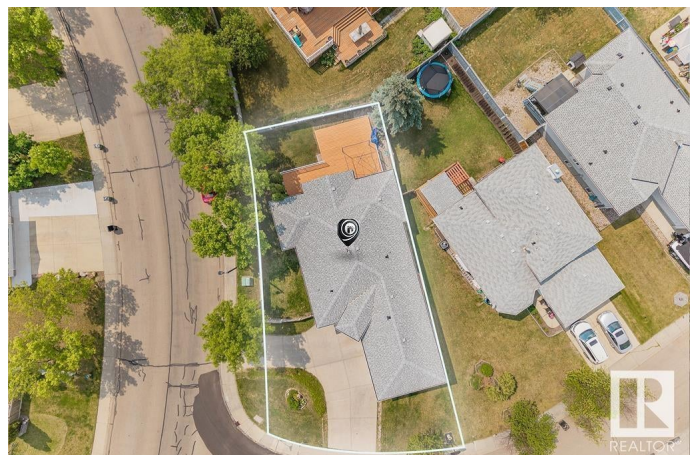
Ormsby Place, Edmonton, AB

This spacious Bungalow on a corner lot, ideal for Comfortable Living and located with ease to all amenities on the West End of Edmonton including West Edmonton Mall, Grocery Stores and Public Transportation. The Back yard has a Large Deck -Perfect for entertaining and enjoying the Southern Sun. Double Car Garage with a circle driveway for more parking allows for ease of parking and guests. The open concept kitchen and open Living Room leave lots of living space. The front Den/Office is nice for private work or an extra guest room. Main Floor Washer and Dryer as well as an additional set down stairs. The Primary Bedroom has plenty of space with a spacious ensuite that includes a large walk-in shower that is wheelchair accessible as well. Each bedroom downstairs has a 2 piece ensuite as well as a 4 pc Bath down stairs. Plenty of great features in this home.

Built in 1995

Essential Information

MLS® #	E4440398
Price	\$550,000
Bedrooms	4
Bathrooms	4.00
Full Baths	3
Half Baths	2



Square Footage	1,636
Acres	0.00
Year Built	1995
Type	Single Family
Sub-Type	Detached Single Family
Style	Bungalow
Status	Active

Community Information

Address	950 Ormsby Wynd
Area	Edmonton
Subdivision	Ormsby Place
City	Edmonton
County	ALBERTA
Province	AB
Postal Code	T5T 6B1

Amenities

Amenities	See Remarks
Parking	Double Garage Attached

Interior

Interior Features	ensuite bathroom
Appliances	Air Cleaner-Electronic, Dishwasher-Built-In, Garage Control, Garage Opener, Oven-Built-In, Refrigerator, Stove-Countertop Electric, Dryer-Two, Washers-Two
Heating	Forced Air-1, Natural Gas
Fireplace	Yes
Fireplaces	Glass Door
Stories	2
Has Basement	Yes
Basement	Full, Finished

Exterior

Exterior	Wood, Stucco
Exterior Features	See Remarks
Roof	Asphalt Shingles
Construction	Wood, Stucco
Foundation	Concrete Perimeter

Additional Information

Date Listed June 4th, 2025
Days on Market 45
Zoning Zone 20

DATA IS DEEMED RELIABLE BUT IS NOT GUARANTEED ACCURATE BY THE REALTORS® ASSOCIATION OF EDMONTON. COPYRIGHT 2025 BY THE REALTORS® ASSOCIATION OF EDMONTON. ALL RIGHTS RESERVED.Trademarks are owned or controlled by the Canadian Real Estate Association (CREA) and identify real estate professionals who are members of CREA (REALTOR®, REALTORS®) and/or the quality of services they provide (MLS®, Multiple Listing Service®)
Listing information last updated on July 19th, 2025 at 4:32am MDT