

\$195,000 - 106 13625 34 Street, Edmonton

MLS® #E4439736

\$195,000

2 Bedroom, 2.00 Bathroom, 992 sqft

Condo / Townhouse on 0.00 Acres

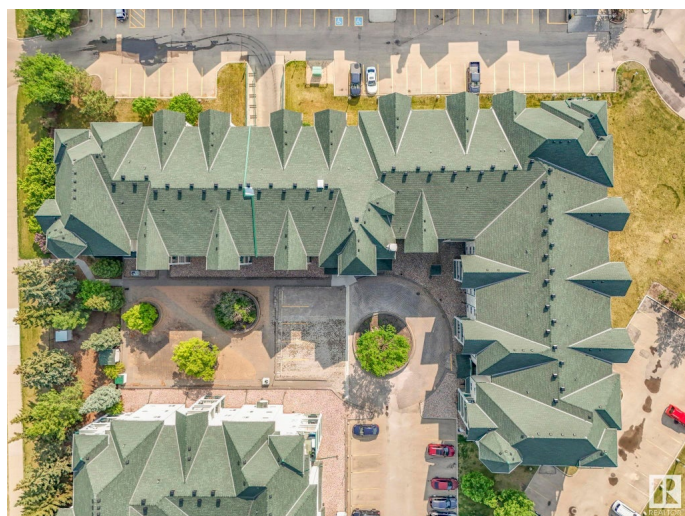
Belmont, Edmonton, AB

Welcome to Chelsea Greene! This turn-key condo is located in a desirable adults-only building and shines with pride of ownership throughout! This well-maintained END UNIT offers a spacious entry, a large in-suite laundry room with extra storage (shelving unit included), and a bright open-concept layout connecting the kitchen, living, and dining areas. Enjoy updated flooring, loads of natural light, and a balcony with gas BBQ hookup. With 2 bedrooms and 2 full bathrooms, the layout is ideal for shared living or guests. Bonus features include TWO parking stalls: one surface and one heated underground, as well as a storage locker. All appliances are included for true move-in ready convenience. The building offers an elevator, social room, and visitor parking, plus it is walkable to coffee shops, parks and shopping, making this the perfect low-maintenance home in a fantastic location!

Built in 2007

Essential Information

MLS® #	E4439736
Price	\$195,000
Bedrooms	2
Bathrooms	2.00
Full Baths	2



Square Footage	992
Acres	0.00
Year Built	2007
Type	Condo / Townhouse
Sub-Type	Lowrise Apartment
Style	Single Level Apartment
Status	Active

Community Information

Address	106 13625 34 Street
Area	Edmonton
Subdivision	Belmont
City	Edmonton
County	ALBERTA
Province	AB
Postal Code	T5A 0E3

Amenities

Amenities	Detectors Smoke, Patio, Secured Parking, Security Door, Storage-In-Suite, Storage Cage
Parking	Stall, Underground

Interior

Interior Features	ensuite bathroom
Appliances	Dishwasher-Built-In, Dryer, Microwave Hood Fan, Refrigerator, Stove-Electric, Washer, See Remarks
Heating	Hot Water, Natural Gas
# of Stories	4
Stories	1
Has Basement	Yes
Basement	None, No Basement

Exterior

Exterior	Wood, Stucco
Exterior Features	No Through Road, Playground Nearby, Public Transportation, Shopping Nearby
Roof	Asphalt Shingles
Construction	Wood, Stucco
Foundation	Concrete Perimeter

Additional Information

Date Listed	May 31st, 2025
Days on Market	8
Zoning	Zone 35
Condo Fee	\$666

DATA IS DEEMED RELIABLE BUT IS NOT GUARANTEED ACCURATE BY THE REALTORS® ASSOCIATION OF EDMONTON. COPYRIGHT 2025 BY THE REALTORS® ASSOCIATION OF EDMONTON. ALL RIGHTS RESERVED.Trademarks are owned or controlled by the Canadian Real Estate Association (CREA) and identify real estate professionals who are members of CREA (REALTOR®, REALTORS®) and/or the quality of services they provide (MLS®, Multiple Listing Service®)

Listing information last updated on June 8th, 2025 at 3:17am MDT