

\$1,490,000 - 21332 Twp Road 564, Rural Strathcona County

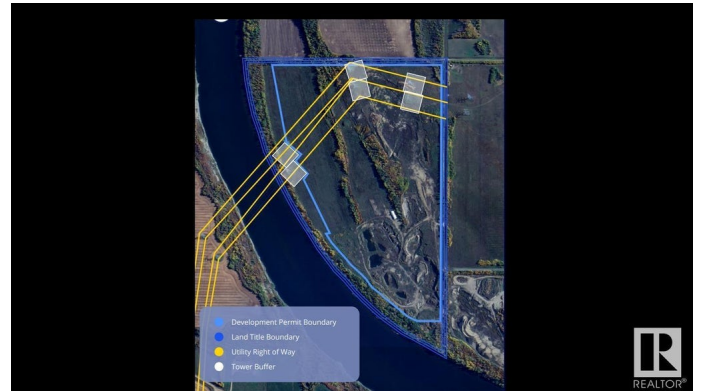
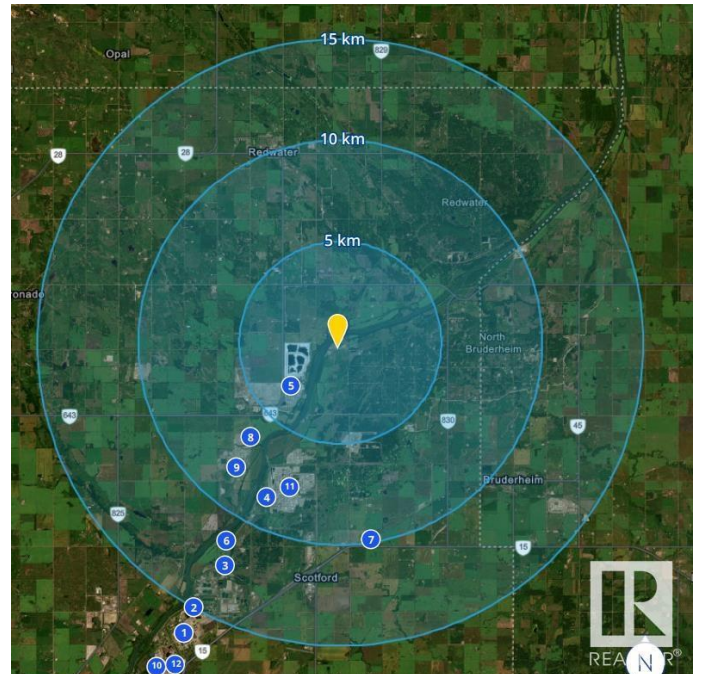
MLS® #E4439276

\$1,490,000

0 Bedroom, 0.00 Bathroom,
Rural on 135.00 Acres

None, Rural Strathcona County, AB

Visit the Listing Brokerage (and/or listing REALTOR®) website to obtain additional information. Nestled in the heart of North Strathcona County, this expansive 135-acre aggregate quarry offers an exceptional opportunity for high-quality material sourcing. The site is rich with a diverse range of aggregate resources, including sand, gravel, clay, and sandy clay—making it an invaluable asset for construction, landscaping, and industrial applications. Strategically positioned within a thriving industrial corridor, this quarry is surrounded by key industry players such as Dow, Keyera, and Pembina refineries, offering both logistical advantages and robust regional demand. Easily accessible via Township Road 564 and Range Road 213A, this site is primed for efficient transportation and development, ensuring smooth operations for any business looking to harness its abundant natural resources. With its prime location, top-tier aggregate reserves, and seamless access.



Essential Information

MLS® #	E4439276
Price	\$1,490,000

Bathrooms	0.00
Acres	135.00
Type	Rural
Sub-Type	Vacant Lot/Land
Status	Active

Community Information

Address	21332 Twp Road 564
Area	Rural Strathcona County
Subdivision	None
City	Rural Strathcona County
County	ALBERTA
Province	AB
Postal Code	T8L 4C5

Exterior

Exterior Features	Hillside, Level Land, Private Setting, River Valley View, River View, Treed Lot
-------------------	---

Additional Information

Date Listed	May 29th, 2025
Days on Market	100
Zoning	Zone 80

DATA IS DEEMED RELIABLE BUT IS NOT GUARANTEED ACCURATE BY THE REALTORS® ASSOCIATION OF EDMONTON. COPYRIGHT 2025 BY THE REALTORS® ASSOCIATION OF EDMONTON. ALL RIGHTS RESERVED. Trademarks are owned or controlled by the Canadian Real Estate Association (CREA) and identify real estate professionals who are members of CREA (REALTOR®, REALTORS®) and/or the quality of services they provide (MLS®, Multiple Listing Service®)

Listing information last updated on September 6th, 2025 at 12:32am MDT