

## \$495,000 - 461075 Rr#53, Rural Wetaskiwin County

MLS® #E4439013

**\$495,000**

1 Bedroom, 2.00 Bathroom, 1,430 sqft

Rural on 10.43 Acres

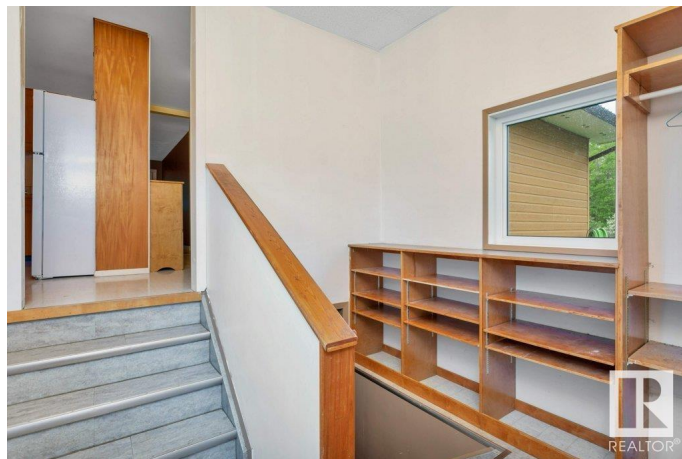
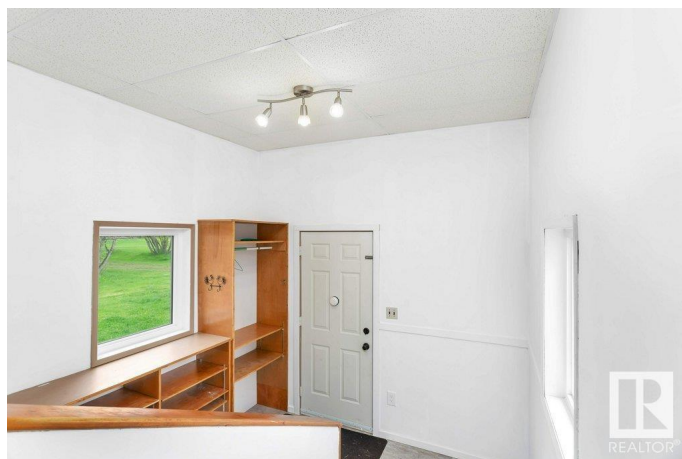
None, Rural Wetaskiwin County, AB

Step into the country lifestyle with this beautifully maintained acreage just off the pavement—ideal for hobby farming and sustainable living. Winner of the 1985 Family Farm Award, this fertile property consistently delivers high-yield gardens and boasts an abundance of established fruit and berry trees. The property features multiple storage sheds and a well-equipped 1000sq'+ woodworking shop with infrared heating—perfect for year-round projects. A functional barn and cross-fencing with several pens and shelters provide a great set up for raising animals. The home is designed for acreage life with it's large kitchen perfect for creating culinary creations from food raised right out your own door. This acreage has been well loved by its' owners and is ready for the next family to call it home!

Built in 1971

### Essential Information

MLS® #	E4439013
Price	\$495,000
Bedrooms	1
Bathrooms	2.00
Full Baths	2
Square Footage	1,430
Acres	10.43
Year Built	1971



Type	Rural
Sub-Type	Detached Single Family
Style	Bi-Level
Status	Active

### Community Information

Address	461075 Rr#53
Area	Rural Wetaskiwin County
Subdivision	None
City	Rural Wetaskiwin County
County	ALBERTA
Province	AB
Postal Code	T0C 2X0

### Amenities

Features	Deck, Dog Run-Fenced In, Fire Pit
----------	-----------------------------------

### Interior

Heating	Forced Air-1, Natural Gas
Fireplace	Yes
Stories	2
Has Basement	Yes
Basement	Full, Partially Finished

### Exterior

Exterior	Wood
Exterior Features	Fenced, Fruit Trees/Shrubs
Construction	Wood
Foundation	Concrete Perimeter

### Additional Information

Date Listed	May 25th, 2025
Days on Market	24
Zoning	Zone 90

DATA IS DEEMED RELIABLE BUT IS NOT GUARANTEED ACCURATE BY THE REALTORS® ASSOCIATION OF EDMONTON. COPYRIGHT 2025 BY THE REALTORS® ASSOCIATION OF EDMONTON. ALL RIGHTS RESERVED. Trademarks are owned or controlled by the Canadian Real Estate Association (CREA) and identify real estate professionals who are members of CREA (REALTOR®, REALTORS®) and/or the quality of services they provide (MLS®, Multiple Listing Service®)

Listing information last updated on June 18th, 2025 at 8:47am MDT