

\$75,000 - 15 11032 Hwy 13, Rural Wetaskiwin County

MLS® #E4438977

\$75,000

0 Bedroom, 0.00 Bathroom,

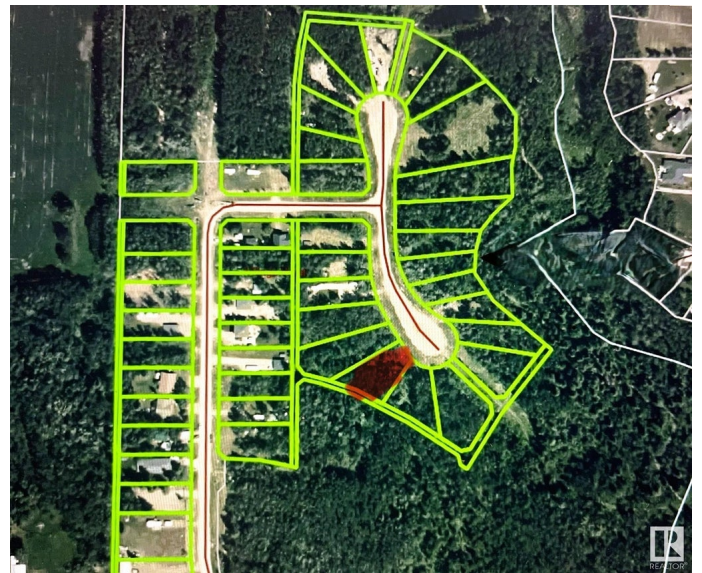
Rural on 0.34 Acres

Village West, Rural Wetaskiwin County, AB

Choose your own neighbours! Rare opportunity to purchase adjacent pie-shaped lots in Village West Estates at Pigeon Lake. Have an impressive circular drive, OR purchase JUST this beautiful .34 acre lot for \$75,000, and have friends or family purchase the similarly beautiful .44 acre lot next door! Enjoy the privacy and tranquility of this over 1/3 acre treed lot just steps along the trails and a bridge away from the Village at Pigeon Lake and its many amenities, including: grocery, gas, restaurants, lounges, inn, spa, liquor, cannabis, clothing, laundry, ice cream, pizza, bank, and more! Black Bull Golf Resort is across the road. Three other golf courses to choose from in the area. Ma-me-o Beach & boat launch nearby. Schools too. Live year-round! Just less than hour from Edmonton, and 1/2 hour from Wetaskiwin, Millet, Calmar etc. Who says you can't have your cake and eat it too?

Essential Information

MLS® #	E4438977
Price	\$75,000
Bathrooms	0.00
Acres	0.34
Type	Rural
Sub-Type	Vacant Lot/Land



Status Active

Community Information

Address 15 11032 Hwy 13
Area Rural Wetaskiwin County
Subdivision Village West
City Rural Wetaskiwin County
County ALBERTA
Province AB
Postal Code T0C 2V0

Exterior

Exterior Features Cul-De-Sac, Golf Nearby, Schools, Shopping Nearby

Additional Information

Date Listed May 28th, 2025
Days on Market 21
Zoning Zone 90

DATA IS DEEMED RELIABLE BUT IS NOT GUARANTEED ACCURATE BY THE REALTORS® ASSOCIATION OF EDMONTON. COPYRIGHT 2025 BY THE REALTORS® ASSOCIATION OF EDMONTON. ALL RIGHTS RESERVED.Trademarks are owned or controlled by the Canadian Real Estate Association (CREA) and identify real estate professionals who are members of CREA (REALTOR®, REALTORS®) and/or the quality of services they provide (MLS®, Multiple Listing Service®)
Listing information last updated on June 18th, 2025 at 3:47am MDT