

\$149,900 - 5 10710 84 Avenue, Edmonton

MLS® #E4436732

\$149,900

1 Bedroom, 1.00 Bathroom, 603 sqft

Condo / Townhouse on 0.00 Acres

Garneau, Edmonton, AB

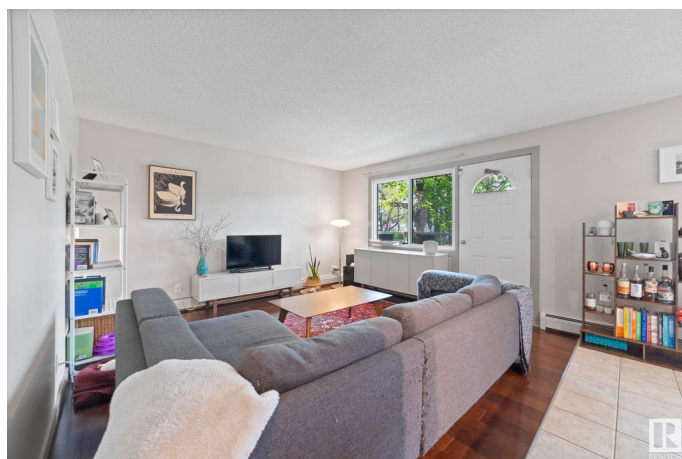
Welcome home to Electus in this sunny & chic 1 bedroom & 1 bath condo with SOUTH FACING BALCONY! ONLY 3 MINUTE WALK TO WHYTE AVE AND 15 MINUTE WALK TO UofA! You will love the bright/open floor plan featuring NEWLY UPDATED KITCHEN & BATHROOM CABINETRY (2025), hard wood floors & spacious rooms throughout! The open concept kitchen/dining/family room has large windows providing plenty of natural light. Generously sized primary suite with large closet. The 4 piece bathroom is a nice oasis after a busy day. IN-SUITE LAUNDRY with storage provides plenty of extra space in suite!

Easy access to the assigned parking stall and additional storage unit downstairs! Prime location within walking distance to Safeway, Restaurants, Cafe's Shoppers Drug Mart, UofA campus and more! **CONDO FEES OF \$530.69 INCLUDE HEAT & WATER**
Welcome home!

Built in 1971

Essential Information

MLS® #	E4436732
Price	\$149,900
Bedrooms	1
Bathrooms	1.00
Full Baths	1



Square Footage	603
Acres	0.00
Year Built	1971
Type	Condo / Townhouse
Sub-Type	Lowrise Apartment
Style	Single Level Apartment
Status	Active

Community Information

Address	5 10710 84 Avenue
Area	Edmonton
Subdivision	Garneau
City	Edmonton
County	ALBERTA
Province	AB
Postal Code	T6E 2H9

Amenities

Amenities	Intercom, Parking-Plug-Ins, Parking-Visitor, Security Door, Storage-Locker Room, Vinyl Windows
Parking	Stall

Interior

Appliances	Dishwasher-Built-In, Dryer, Microwave Hood Fan, Refrigerator, Stove-Electric, Washer, Window Coverings
Heating	Baseboard, Hot Water, Natural Gas
# of Stories	3
Stories	1
Has Basement	Yes
Basement	None, No Basement

Exterior

Exterior	Wood, Brick, Vinyl
Exterior Features	Back Lane, Flat Site, Landscaped, Low Maintenance Landscape, Public Transportation, Schools, Shopping Nearby
Roof	Tar & Gravel
Construction	Wood, Brick, Vinyl
Foundation	Concrete Perimeter

School Information

Elementary	Garneau, Mount Carmel
Middle	Ottewell, Donnan
High	Strathcona, J H Picard

Additional Information

Date Listed	May 15th, 2025
Days on Market	6
Zoning	Zone 15
Condo Fee	\$531

DATA IS DEEMED RELIABLE BUT IS NOT GUARANTEED ACCURATE BY THE REALTORS® ASSOCIATION OF EDMONTON. COPYRIGHT 2025 BY THE REALTORS® ASSOCIATION OF EDMONTON. ALL RIGHTS RESERVED. Trademarks are owned or controlled by the Canadian Real Estate Association (CREA) and identify real estate professionals who are members of CREA (REALTOR®, REALTORS®) and/or the quality of services they provide (MLS®, Multiple Listing Service®)

Listing information last updated on May 20th, 2025 at 9:47pm MDT