

\$339,900 - 21 465 Hemingway Road, Edmonton

MLS® #E4436340

\$339,900

3 Bedroom, 2.50 Bathroom, 1,244 sqft

Condo / Townhouse on 0.00 Acres

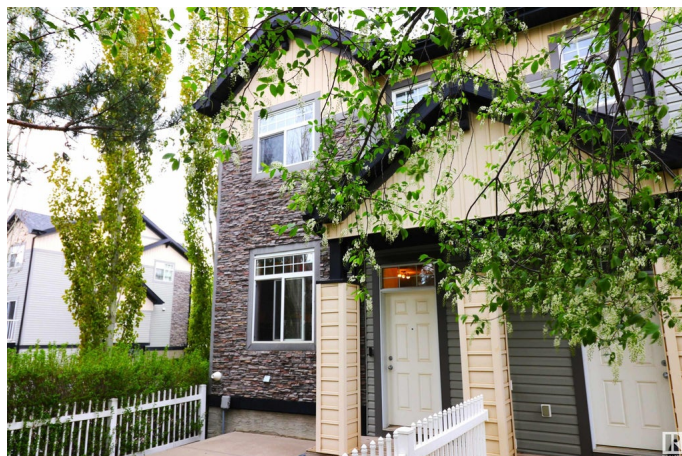
The Hamptons, Edmonton, AB

END UNIT! Meticulous 3 bed 2.5 bath townhome in Mosaic Meadows. Lots of upgrades with hardwood floors, stainless steel appliances & extra windows letting in lots of natural light. Great open concept layout - a large main floor living space, a dining area with an extra bump out for storage & a great kitchen with dark brown cabinets, subway tile backsplash, lots of storage & a peninsula with a raised breakfast bar. There is a balcony off the living room to enjoy the morning sun & let the fresh air in. 3 bedrooms upstairs & 2 full baths - the master has a walk-in closet & ensuite with shower. The basement houses laundry, utilities, storage & entrance to the attached DOUBLE GARAGE! Fenced in yard with natural gas hook up for BBQ. Nicely landscaped & well managed building.

Built in 2010

Essential Information

| | |
|----------------|-----------|
| MLS® # | E4436340 |
| Price | \$339,900 |
| Bedrooms | 3 |
| Bathrooms | 2.50 |
| Full Baths | 2 |
| Half Baths | 1 |
| Square Footage | 1,244 |
| Acres | 0.00 |



| | |
|------------|-------------------|
| Year Built | 2010 |
| Type | Condo / Townhouse |
| Sub-Type | Townhouse |
| Style | 2 Storey |
| Status | Active |

Community Information

| | |
|-------------|-----------------------|
| Address | 21 465 Hemingway Road |
| Area | Edmonton |
| Subdivision | The Hamptons |
| City | Edmonton |
| County | ALBERTA |
| Province | AB |
| Postal Code | T6M 0J7 |

Amenities

| | |
|----------------|--------------------------------|
| Amenities | Parking-Visitor, Vinyl Windows |
| Parking Spaces | 2 |
| Parking | Double Garage Attached |

Interior

| | |
|-------------------|--|
| Interior Features | ensuite bathroom |
| Appliances | Dishwasher-Built-In, Dryer, Refrigerator, Stove-Electric, Washer, Window Coverings |
| Heating | Forced Air-1, Natural Gas |
| Stories | 2 |
| Has Basement | Yes |
| Basement | Partial, Unfinished |

Exterior

| | |
|-------------------|--------------------|
| Exterior | Wood, Stone, Vinyl |
| Exterior Features | Fenced, Landscaped |
| Roof | Asphalt Shingles |
| Construction | Wood, Stone, Vinyl |
| Foundation | Concrete Perimeter |

School Information

| | |
|------------|---------------------------|
| Elementary | Bessie Nichols / Kim Hung |
| Middle | Bessie Nichols / Kim Hung |

High

Jasper Place

Additional Information

| | |
|----------------|----------------|
| Date Listed | May 14th, 2025 |
| Days on Market | 16 |
| Zoning | Zone 58 |
| HOA Fees | 183.75 |
| HOA Fees Freq. | Annually |
| Condo Fee | \$276 |

DATA IS DEEMED RELIABLE BUT IS NOT GUARANTEED ACCURATE BY THE REALTORS® ASSOCIATION OF EDMONTON. COPYRIGHT 2025 BY THE REALTORS® ASSOCIATION OF EDMONTON. ALL RIGHTS RESERVED.Trademarks are owned or controlled by the Canadian Real Estate Association (CREA) and identify real estate professionals who are members of CREA (REALTOR®, REALTORS®) and/or the quality of services they provide (MLS®, Multiple Listing Service®)

Listing information last updated on May 30th, 2025 at 3:32pm MDT