

\$499,900 - 14 26116 Hghway 16, Rural Parkland County

MLS® #E4435829

\$499,900

3 Bedroom, 2.50 Bathroom, 1,241 sqft

Rural on 0.09 Acres

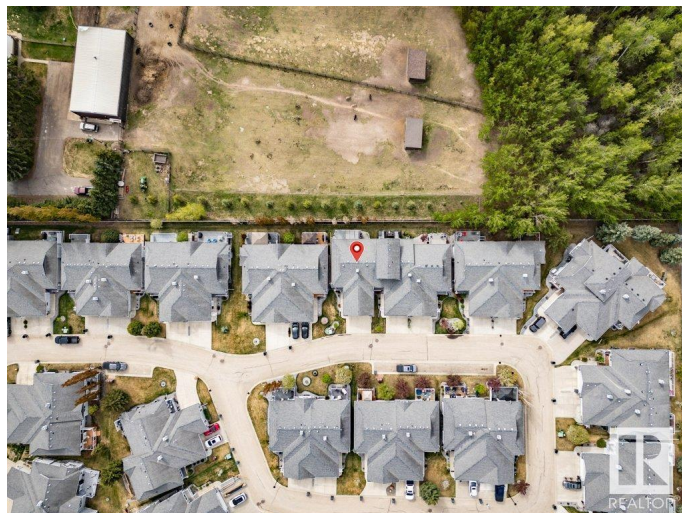
Country Squire Estates, Rural Parkland County, AB

Listings like this NEVER come up and it is EXACTLY what you are looking for. Just off of 231 ST in NW Edmonton is a very private, very exclusive adult community that you didn't know existed. This LOCK n' GO bungalow half duplex is part of a community where you don't have to shovel snow or mow grass and you back onto a beautiful farmers field. This immaculately maintained, original owner home, offers well over 2000 square feet of total living space with 2+1 bedrooms, a gorgeous open concept main floor with stone kitchen countertops, stainless appliances, GAS fireplace in the living room, down the hall to the spacious primary with dreamy en suite with soaker tub and glass shower, main floor laundry and additional bedroom easily used as an office or dining room, lower level developed with living room, bedroom, full bath and additional room used for office. This home is exceptional and truly one of a kind.

Built in 2007

Essential Information

MLS® #	E4435829
Price	\$499,900
Bedrooms	3
Bathrooms	2.50



Full Baths	2
Half Baths	1
Square Footage	1,241
Acres	0.09
Year Built	2007
Type	Rural
Sub-Type	Half Duplex
Style	Bungalow
Status	Active

Community Information

Address	14 26116 Hghway 16
Area	Rural Parkland County
Subdivision	Country Squire Estates
City	Rural Parkland County
County	ALBERTA
Province	AB
Postal Code	T7Y 1A1

Amenities

Features	Off Street Parking, Air Conditioner, Deck, No Animal Home, No Smoking Home, Parking-Visitor, Vinyl Windows
----------	--

Interior

Interior Features	ensuite bathroom
Heating	Forced Air-1, Natural Gas
Fireplace	Yes
Stories	2
Has Basement	Yes
Basement	Full, Finished

Exterior

Exterior	Wood
Exterior Features	Backs Onto Park/Trees, Flat Site, Fruit Trees/Shrubs, Landscaped, Level Land, Low Maintenance Landscape
Construction	Wood
Foundation	Concrete Perimeter

Additional Information

Date Listed	May 10th, 2025
Days on Market	2
Zoning	Zone 70
Condo Fee	\$375

DATA IS DEEMED RELIABLE BUT IS NOT GUARANTEED ACCURATE BY THE REALTORS® ASSOCIATION OF EDMONTON. COPYRIGHT 2025 BY THE REALTORS® ASSOCIATION OF EDMONTON. ALL RIGHTS RESERVED. Trademarks are owned or controlled by the Canadian Real Estate Association (CREA) and identify real estate professionals who are members of CREA (REALTOR®, REALTORS®) and/or the quality of services they provide (MLS®, Multiple Listing Service®)

Listing information last updated on May 12th, 2025 at 4:17pm MDT