

\$464,900 - 238 Southfork Drive, Leduc

MLS® #E4435718

\$464,900

3 Bedroom, 2.50 Bathroom, 1,580 sqft

Single Family on 0.00 Acres

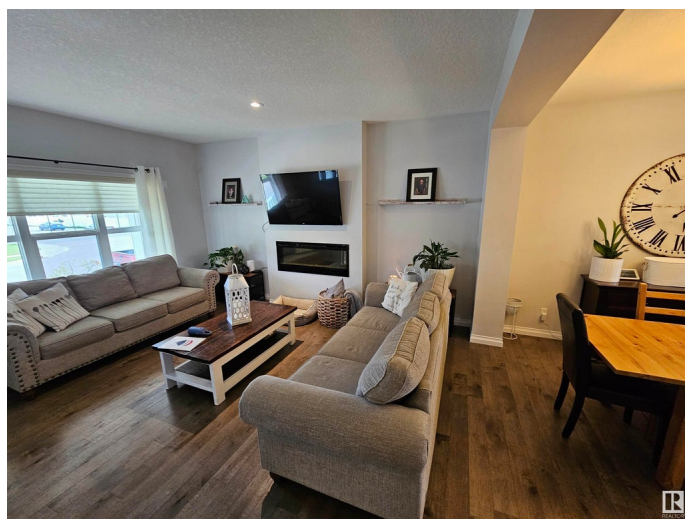
Southfork, Leduc, AB

Southfork Leduc! Step into over 1500 sq ft of beautifully maintained living space in this 3 bedroom home that truly stands out! Featuring an inviting and spacious designed kitchen complete with many upgrades including high end stainless steel appliances, gas stove top, convection oven and double door fridge. The fireplace adds a cozy touch of comfort to the main floor living space. Step outside to a low maintenance yard and two-tier deck, ideal for summer BBQ's with a gas hookup. The double car heated garage includes 220V electrical and is well on its way to becoming a great workshop. Additional highlights include a tankless hot water on demand system, HVR air quality and central vacuum.

Built in 2017

Essential Information

MLS® #	E4435718
Price	\$464,900
Bedrooms	3
Bathrooms	2.50
Full Baths	2
Half Baths	1
Square Footage	1,580
Acres	0.00
Year Built	2017



Type	Single Family
Sub-Type	Detached Single Family
Style	2 Storey
Status	Active

Community Information

Address	238 Southfork Drive
Area	Leduc
Subdivision	Southfork
City	Leduc
County	ALBERTA
Province	AB
Postal Code	T9E 1G3

Amenities

Amenities	On Street Parking, Deck, Hot Water Instant, Hot Water Tankless, HRV System, Natural Gas BBQ Hookup
Parking	Double Garage Detached, Heated, Rear Drive Access

Interior

Interior Features	ensuite bathroom
Appliances	Dishwasher-Built-In, Dryer, Garage Control, Garage Opener, Hood Fan, Oven-Microwave, Refrigerator, Stove-Countertop Gas, Vacuum System Attachments, Vacuum Systems, Washer, TV Wall Mount, Garage Heater
Heating	Forced Air-1, Natural Gas
Fireplace	Yes
Fireplaces	Wall Mount
Stories	2
Has Basement	Yes
Basement	Full, Unfinished

Exterior

Exterior	Wood, Vinyl
Exterior Features	Airport Nearby, Back Lane, Fenced, Flat Site, Low Maintenance Landscape, Playground Nearby, Public Transportation, Schools
Roof	Asphalt Shingles
Construction	Wood, Vinyl
Foundation	Concrete Perimeter

School Information

Elementary	Father Leduc
Middle	Father Leduc

Additional Information

Date Listed	May 9th, 2025
Days on Market	6
Zoning	Zone 81



DATA IS DEEMED RELIABLE BUT IS NOT GUARANTEED ACCURATE BY THE REALTORS® ASSOCIATION OF EDMONTON. COPYRIGHT 2025 BY THE REALTORS® ASSOCIATION OF EDMONTON. ALL RIGHTS RESERVED.Trademarks are owned or controlled by the Canadian Real Estate Association (CREA) and identify real estate professionals who are members of CREA (REALTOR®, REALTORS®) and/or the quality of services they provide (MLS®, Multiple Listing Service®)

Listing information last updated on May 15th, 2025 at 3:32am MDT