

## \$195,000 - 134 142 Selkirk Place, Leduc

MLS® #E4435260

**\$195,000**

2 Bedroom, 1.00 Bathroom, 1,005 sqft

Condo / Townhouse on 0.00 Acres

Suntree (Leduc), Leduc, AB

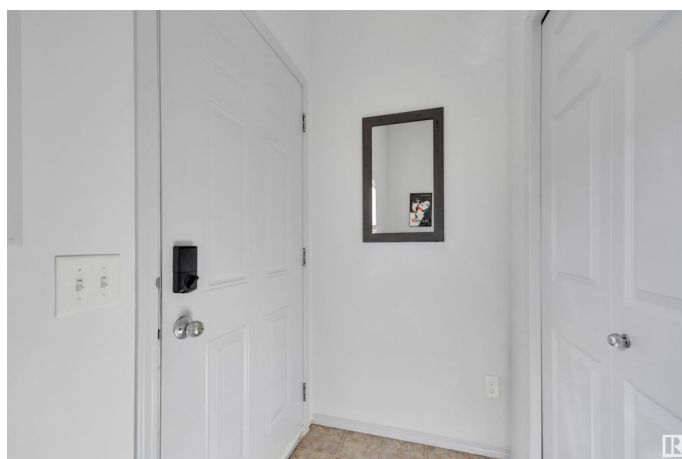
Immaculate 2 bedroom condo. Previously a show home in Suntree Point. Lower level of this up/down duplex offers privacy and lots of living space. 9ft ceilings, 2 large bedrooms, and a laundry / storage room. New flooring - luxury vinyl tile, new carpet in bedroom and stairs. New appliances - dishwasher, stove, washer, dryer, and microwave over stove with hood fan built in. Visitor parking and designated stall. Freshly painted and move in ready!

Built in 2013

### Essential Information

MLS® #	E4435260
Price	\$195,000
Bedrooms	2
Bathrooms	1.00
Full Baths	1
Square Footage	1,005
Acres	0.00
Year Built	2013
Type	Condo / Townhouse
Sub-Type	Half Duplex
Style	Bi-Level
Status	Active

### Community Information



Address	134 142 Selkirk Place
Area	Leduc
Subdivision	Suntree (Leduc)
City	Leduc
County	ALBERTA
Province	AB
Postal Code	T9E 0M9

### **Amenities**

Amenities	No Animal Home, No Smoking Home, Parking-Visitor
Parking	Stall

### **Interior**

Appliances	Dishwasher-Built-In, Dryer, Microwave Hood Fan, Refrigerator, Stove-Electric, Washer
Heating	Forced Air-1, Natural Gas
Stories	1
Has Basement	Yes
Basement	None, No Basement

### **Exterior**

Exterior	Wood, Vinyl
Exterior Features	Landscaped, No Back Lane, Playground Nearby, Shopping Nearby
Roof	Asphalt Shingles
Construction	Wood, Vinyl
Foundation	Concrete Perimeter

### **Additional Information**

Date Listed	May 7th, 2025
Days on Market	9
Zoning	Zone 81
Condo Fee	\$276

DATA IS DEEMED RELIABLE BUT IS NOT GUARANTEED ACCURATE BY THE REALTORS® ASSOCIATION OF EDMONTON. COPYRIGHT 2025 BY THE REALTORS® ASSOCIATION OF EDMONTON. ALL RIGHTS RESERVED. Trademarks are owned or controlled by the Canadian Real Estate Association (CREA) and identify real estate professionals who are members of CREA (REALTOR®, REALTORS®) and/or the quality of services they provide (MLS®, Multiple Listing Service®)

Listing information last updated on May 16th, 2025 at 5:32pm MDT