

# \$114,900 - 13910 Stony Plain Road, Edmonton

MLS® #E4433265

**\$114,900**

1 Bedroom, 1.00 Bathroom, 680 sqft  
Condo / Townhouse on 0.00 Acres

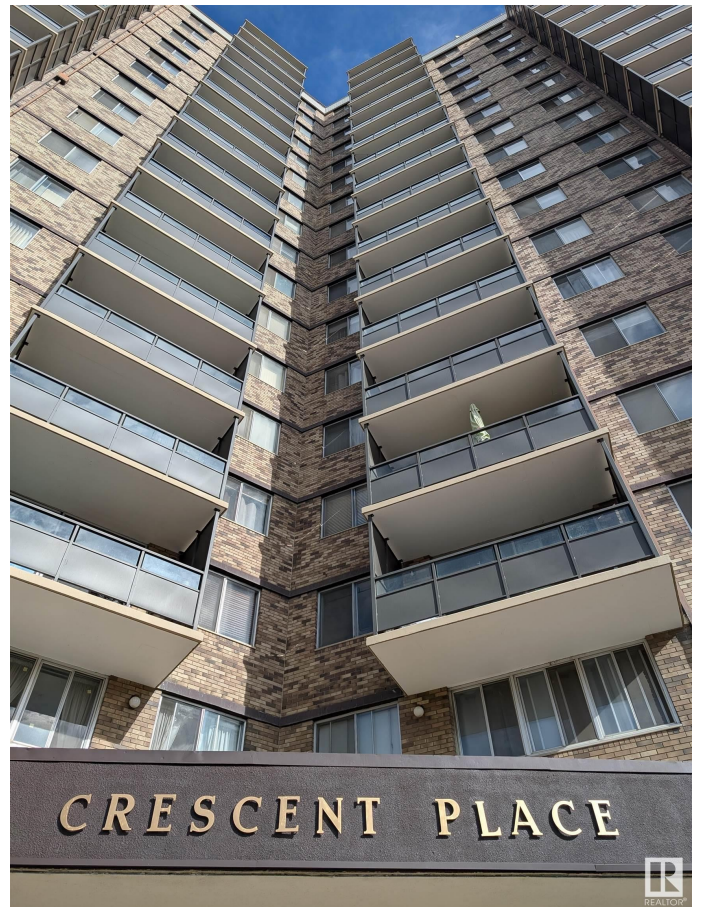
Glenora, Edmonton, AB

Welcome to the beautiful just renovated 1 bed, 1 bath condo in the prestigious Glenora. Starting from entrance, nice lobby interior, to the left management office and to the right swimming pool will welcome you and lead to the 17th floor. Unit entrance offers double closet, spacious storage room for a bike and many other things. Double closet in the bedroom and an extra closet for linen. Nice living room leads you to the huge balcony with great view, where you can enjoy barbeque with family and friends. Bedroom itself can easily fit king size bed with night table and there's still space to move around. There is a salt water swimming pool, sauna and gym to save on membership in cold days. Friendly night security and management staff. Laundry is on the same floor and underground parking for your convenience. Small pets are allowed, and bus stop is just steps away, coffee shops, and restaurants. Perfect location for seniors, professionals or students to enjoy care free living. Condo fee covers all utilities.

Built in 1969

## Essential Information

MLS® #	E4433265
Price	\$114,900
Bedrooms	1



Bathrooms	1.00
Full Baths	1
Square Footage	680
Acres	0.00
Year Built	1969
Type	Condo / Townhouse
Sub-Type	Apartment High Rise
Style	Single Level Apartment
Status	Active

### Community Information

Address	13910 Stony Plain Road
Area	Edmonton
Subdivision	Glenora
City	Edmonton
County	ALBERTA
Province	AB
Postal Code	T5N 3R2

### Amenities

Amenities	Detectors Smoke, Exercise Room, Parking-Visitor, Party Room, Storage
Parking	Underground
Has Pool	Yes

### Interior

Appliances	Dishwasher-Built-In, Garage, Stove-Electric
Heating	Hot Water, Natural Gas
# of Stories	18
Stories	1
Has Basement	Yes
Basement	None, No Basement

### Exterior

Exterior	Concrete, Brick
Exterior Features	Landscaped, Playground Nearby, Public Transportation, Schools
Roof	Tar & Gravel
Construction	Concrete, Brick



Foundation Concrete Perimeter

### **Additional Information**

Date Listed April 27th, 2025

Days on Market 49

Zoning Zone 11

Condo Fee \$628

DATA IS DEEMED RELIABLE BUT IS NOT GUARANTEED ACCURATE BY THE REALTORS® ASSOCIATION OF EDMONTON. COPYRIGHT 2025 BY THE REALTORS® ASSOCIATION OF EDMONTON. ALL RIGHTS RESERVED. Trademarks are owned or controlled by the Canadian Real Estate Association (CREA) and identify real estate professionals who are members of CREA (REALTOR®, REALTORS®) and/or the quality of services they provide (MLS®, Multiple Listing Service®)

Listing information last updated on June 15th, 2025 at 1:32pm MDT