

## \$957,900 - 1335 155 Street, Edmonton

MLS® #E4430030

**\$957,900**

3 Bedroom, 2.50 Bathroom, 1,519 sqft

Single Family on 0.00 Acres

Glenridding Ravine, Edmonton, AB

Luxury awaits at this former show home built by Homexx Corporation located in prestigious Glenridding Ravine. The "Goldstone" floorplan has a stunning entry, breathtaking vaulted ceilings and an open concept design perfect for entertaining. The chef's inspired kitchen overlooks the living area that has custom built-in shelving, an impressive dry bar and a gas fireplace. The master suite has a large walk-thru closet and a five piece ensuite with a separate tub and shower. To complete the main floor there is the laundry room with additional shelving and a two piece bathroom. The beautiful staircase with wrought iron spindles leads to the lower level that has an abundance of natural light. The large family room comes complete with a wet bar. There are also two additional bedrooms, a four piece bathroom and plenty of storage space. Features of the home include quartz countertops, custom cabinetry and beautiful lighting. This impressive home has great curb appeal and backs Jagare Ridge Golf Course.

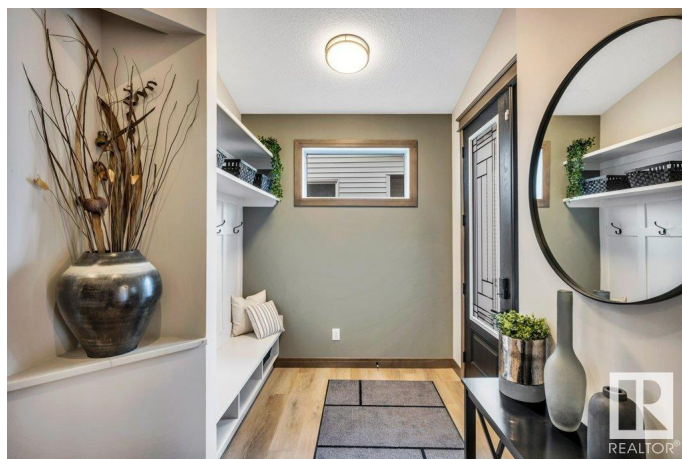
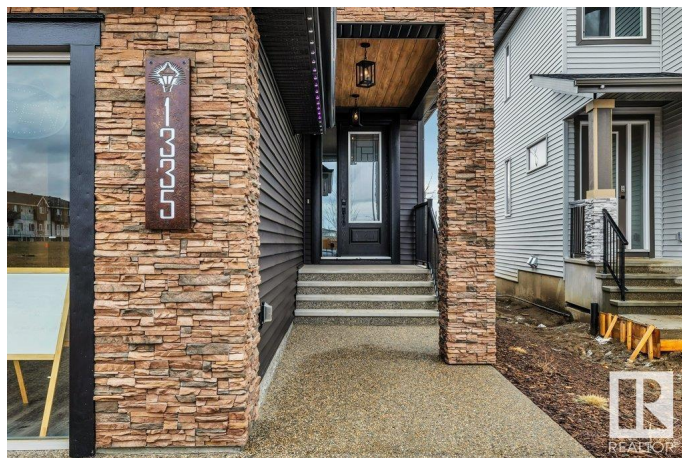
Built in 2023

### Essential Information

MLS® # E4430030

Price \$957,900

Bedrooms 3



Bathrooms	2.50
Full Baths	2
Half Baths	1
Square Footage	1,519
Acres	0.00
Year Built	2023
Type	Single Family
Sub-Type	Detached Single Family
Style	Bungalow
Status	Active

### Community Information

Address	1335 155 Street
Area	Edmonton
Subdivision	Glenridding Ravine
City	Edmonton
County	ALBERTA
Province	AB
Postal Code	T6W 5J4

### Amenities

Amenities	Air Conditioner, Bar, Deck, Natural Gas BBQ Hookup
Parking	Double Garage Attached

### Interior

Interior Features	ensuite bathroom
Appliances	Air Conditioning-Central, Garage Control, Garage Opener, Oven-Built-In, Oven-Microwave, Stove-Gas, Window Coverings, Wine/Beverage Cooler, Refrigerators-Two, Dishwasher-Two, Garage Heater
Heating	Forced Air-1, Natural Gas
Fireplace	Yes
Fireplaces	Mantel, Tile Surround
Stories	2
Has Basement	Yes
Basement	Full, Finished

### Exterior

Exterior	Wood, Stone, Vinyl
Exterior Features	Backs    Onto    Park/Trees,    Golf    Nearby,    Landscaped,    Public

	Transportation, Schools, Shopping Nearby
Roof	Asphalt Shingles
Construction	Wood, Stone, Vinyl
Foundation	Concrete Perimeter

### **Additional Information**

Date Listed	April 10th, 2025
Days on Market	20
Zoning	Zone 56

DATA IS DEEMED RELIABLE BUT IS NOT GUARANTEED ACCURATE BY THE REALTORS® ASSOCIATION OF EDMONTON. COPYRIGHT 2025 BY THE REALTORS® ASSOCIATION OF EDMONTON. ALL RIGHTS RESERVED. Trademarks are owned or controlled by the Canadian Real Estate Association (CREA) and identify real estate professionals who are members of CREA (REALTOR®, REALTORS®) and/or the quality of services they provide (MLS®, Multiple Listing Service®)

Listing information last updated on April 30th, 2025 at 7:17am MDT