

\$599,000 - 25520 Twp Rd 630, Rural Westlock County

MLS® #E4428330

\$599,000

3 Bedroom, 1.50 Bathroom, 1,542 sqft

Rural on 5.78 Acres

None, Rural Westlock County, AB

Nestled amidst enchanting trees, this exquisite 1,500 sq. ft. bungalow on 5.78 acres near Larkspur, AB, offers a harmonious blend of beauty & practicality. Built with care in 1998, the home features a spacious kitchen with an island, breakfast counter, countertop stove, wall oven, & vaulted ceilings that extend into the inviting living room. Complemented by ceramic tile flooring, the kitchen is both elegant & functional. Primary bedroom is large with 2 lighted closets, a shared 2-pce. ensuite (you could take out the closet and add a shower). Bedrooms have engineered hardwood flooring. Living room with vinyl plank flooring, heatilator fireplace, oak entertainment unit. Basement is ready to be developed. Attached double garage (not accessible from inside the house), & a detached double garage, partially insulated, heated with a pellet stove. Close to Long Island Lake, Black Bear Grazing Reserve (good trails for quadding, side-by sides, snowmobiles, horses, etc.) Most of the furniture stays with. Decks

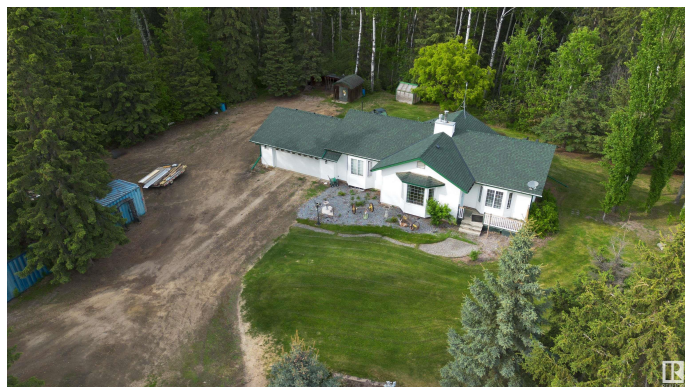
Built in 1998

Essential Information

MLS® # E4428330

Price \$599,000

Bedrooms 3



Bathrooms	1.50
Full Baths	1
Half Baths	1
Square Footage	1,542
Acres	5.78
Year Built	1998
Type	Rural
Sub-Type	Detached Single Family
Style	Bungalow
Status	Active

Community Information

Address	25520 Twp Rd 630
Area	Rural Westlock County
Subdivision	None
City	Rural Westlock County
County	ALBERTA
Province	AB
Postal Code	T0G 0S0

Amenities

Features	Exterior Walls- 2"x6", Greenhouse, Hot Water Natural Gas, No Smoking Home, Vaulted Ceiling, Vinyl Windows, Workshop, Vacuum System-Roughed-In
Parking Spaces	8

Interior

Interior Features	ensuite bathroom
Heating	Forced Air-1, Natural Gas
Fireplace	Yes
Stories	1
Has Basement	Yes
Basement	Full, Unfinished

Exterior

Exterior	Wood
Exterior Features	Backs Onto Park/Trees, Fruit Trees/Shrubs, Landscaped, Ravine View, Treed Lot, Vegetable Garden, Partially Fenced
Construction	Wood

Foundation Concrete Perimeter

Additional Information

Date Listed March 29th, 2025

Days on Market 101

Zoning Zone 70

DATA IS DEEMED RELIABLE BUT IS NOT GUARANTEED ACCURATE BY THE REALTORS® ASSOCIATION OF EDMONTON. COPYRIGHT 2025 BY THE REALTORS® ASSOCIATION OF EDMONTON. ALL RIGHTS RESERVED.Trademarks are owned or controlled by the Canadian Real Estate Association (CREA) and identify real estate professionals who are members of CREA (REALTOR®, REALTORS®) and/or the quality of services they provide (MLS®, Multiple Listing Service®)

Listing information last updated on July 8th, 2025 at 3:03pm MDT