

Courtesy Of Jeff D Jackson Of Bode

## \$566,895 - 304 29 Street, Edmonton

MLS® #E4423724

**\$566,895**

3 Bedroom, 2.50 Bathroom, 1,689 sqft

Single Family on 0.00 Acres

Alces, Edmonton, AB

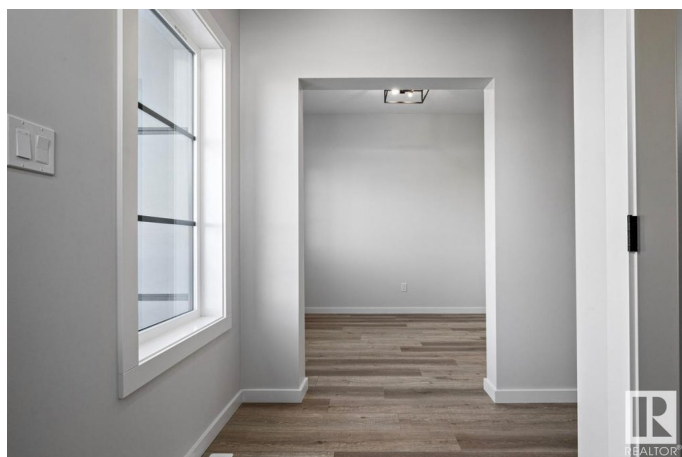
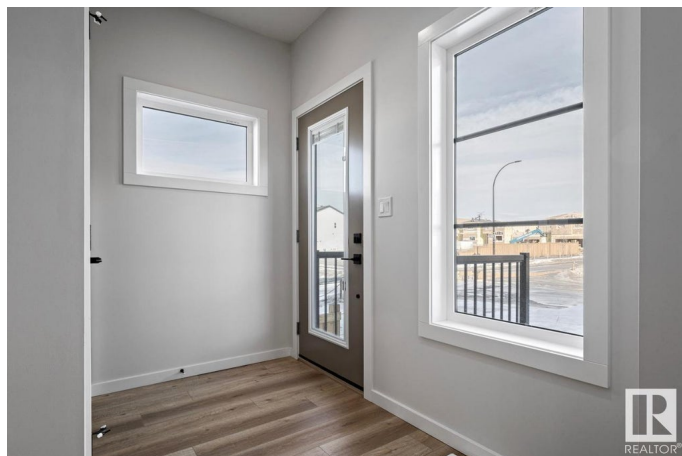
The Flora K by Bedrock Homes is a beautifully designed home that perfectly balances functionality and style. As you step inside, a cozy front foyer welcomes you, leading to a versatile front-facing flex room—ideal for a home office, studio, or playroom. The open-concept main floor features a spacious great room that seamlessly connects to the dining area and a stunning designer corner kitchen, complete with an upgraded layout and a convenient corner pantry. A mudroom and powder room add practicality to the space. Upstairs, a central bonus room offers additional living space, while two rear bedrooms, a full bathroom, and a second-floor laundry room provide comfort and convenience. The primary suite is a true retreat, boasting a generous walk-in closet and a private 3-piece ensuite. Situated on a desirable corner lot, this home also features a side entry, a 9-foot basement, and an oversized two-car garage—perfect for growing families and those who love extra space.

Built in 2025

### Essential Information

MLS® # E4423724

Price \$566,895



Bedrooms	3
Bathrooms	2.50
Full Baths	2
Half Baths	1
Square Footage	1,689
Acres	0.00
Year Built	2025
Type	Single Family
Sub-Type	Detached Single Family
Style	2 Storey
Status	Active

### Community Information

Address	304 29 Street
Area	Edmonton
Subdivision	Alces
City	Edmonton
County	ALBERTA
Province	AB
Postal Code	T6X 3E7

### Amenities

Amenities	Air Conditioner, No Animal Home, No Smoking Home
Parking Spaces	4
Parking	Double Garage Detached

### Interior

Interior Features	ensuite bathroom
Appliances	Humidifier-Power(Furnace)
Heating	Forced Air-1, Natural Gas
Fireplace	Yes
Fireplaces	Insert
Stories	2
Has Basement	Yes
Basement	Full, Unfinished

### Exterior

Exterior	Wood, Vinyl
Exterior Features	Playground Nearby, Schools, Shopping Nearby

Roof	Asphalt Shingles
Construction	Wood, Vinyl
Foundation	Concrete Perimeter

**Additional Information**

Date Listed	March 3rd, 2025
Days on Market	105
Zoning	Zone 53

DATA IS DEEMED RELIABLE BUT IS NOT GUARANTEED ACCURATE BY THE REALTORS® ASSOCIATION OF EDMONTON. COPYRIGHT 2025 BY THE REALTORS® ASSOCIATION OF EDMONTON. ALL RIGHTS RESERVED.Trademarks are owned or controlled by the Canadian Real Estate Association (CREA) and identify real estate professionals who are members of CREA (REALTOR®, REALTORS®) and/or the quality of services they provide (MLS®, Multiple Listing Service®)

Listing information last updated on June 16th, 2025 at 7:02am MDT