

\$1,097,000 - 5904 32 St Ne, Rural Leduc County

MLS® #E4423443

\$1,097,000

6 Bedroom, 6.00 Bathroom, 3,190 sqft

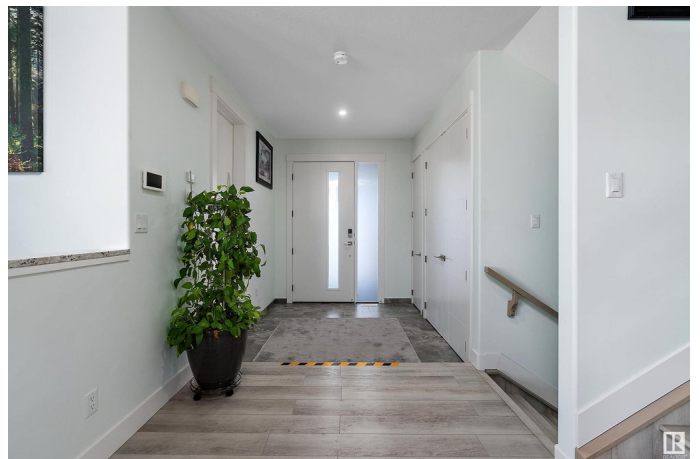
Rural on 0.20 Acres

Royal Oaks_LEDU, Rural Leduc County, AB

ATTENTION TO DETAIL in this CUSTOM built 3189 sq.ft 2 storey featuring 6 BEDROOMS, 7 SOUND PROOF BATHS, 3 COVERED VERANDAHS, a SPICE KITCHEN & a FULLY SELF CONTAINED 2 BED SUITE with SEPARATE ENTRANCE, a 2ND SUITE plus SOLAR IN PLACE. WOW! Oversized TRIPLE GARAGE, timeless STONE TILE EXTERIOR, RUBBER ROOF, VINYL PLANK, tile & carpeting, walls of TRIPLE PANE WINDOWS & upgraded STAINLESS APPLIANCES. The SUNLIT living room offers a spacious GATHERING AREA separated from the kitchen by the 3 SIDED FIREPLACE. Gorgeous kitchen & dining area with GRANITE, MODERN CABINETRY & PANTRY accessed from the SPICE KITCHEN & HALLWAY plus a laundry, bath & MUD ROOM that leads to the GARAGE. The gracious primary features a WALK THRU CLOSET to a SPA ENSUITE. A den/bed offers a 3 pc. bath & SEPARATE ENTRANCE at the front door. Up to a FULL SUITE with a bedroom, living room, kitchen, laundry, bath & private BALCONY. Down to a large GAMES ROOM, bedroom with 4 pc, a 2 pc bath, bar & a lovely 2 bedroom suite with its OWN ENTRANCE.

Built in 2019

Essential Information



MLS® #	E4423443
Price	\$1,097,000
Bedrooms	6
Bathrooms	6.00
Full Baths	5
Half Baths	2
Square Footage	3,190
Acres	0.20
Year Built	2019
Type	Rural
Sub-Type	Detached Single Family
Style	2 Storey
Status	Active

Community Information

Address	5904 32 St Ne
Area	Rural Leduc County
Subdivision	Royal Oaks_LEDU
City	Rural Leduc County
County	ALBERTA
Province	AB
Postal Code	T4X 0X4

Amenities

Features	Air Conditioner, Ceiling 10 ft., Ceiling 9 ft., Closet Organizers, Deck, Front Porch, Low Flw/Dual Flush Toilet, Wet Bar
Parking Spaces	6

Interior

Interior Features	ensuite bathroom
Heating	Forced Air-2, Natural Gas, Solar
Fireplace	Yes
Stories	3
Has Suite	Yes
Has Basement	Yes
Basement	Full, Finished

Exterior

Exterior	Wood
----------	------

Exterior Features	Corner Lot, Cul-De-Sac, Fenced, Golf Nearby, Landscaped, Low Maintenance Landscape
Construction	Wood
Foundation	Concrete Perimeter

Additional Information

Date Listed	February 27th, 2025
Days on Market	111
Zoning	Zone 80

DATA IS DEEMED RELIABLE BUT IS NOT GUARANTEED ACCURATE BY THE REALTORS® ASSOCIATION OF EDMONTON. COPYRIGHT 2025 BY THE REALTORS® ASSOCIATION OF EDMONTON. ALL RIGHTS RESERVED.Trademarks are owned or controlled by the Canadian Real Estate Association (CREA) and identify real estate professionals who are members of CREA (REALTOR®, REALTORS®) and/or the quality of services they provide (MLS®, Multiple Listing Service®)

Listing information last updated on June 18th, 2025 at 1:17pm MDT