

\$1,495,000 - 34 26409 Twp Rd 532a, Rural Parkland County

MLS® #E4420905

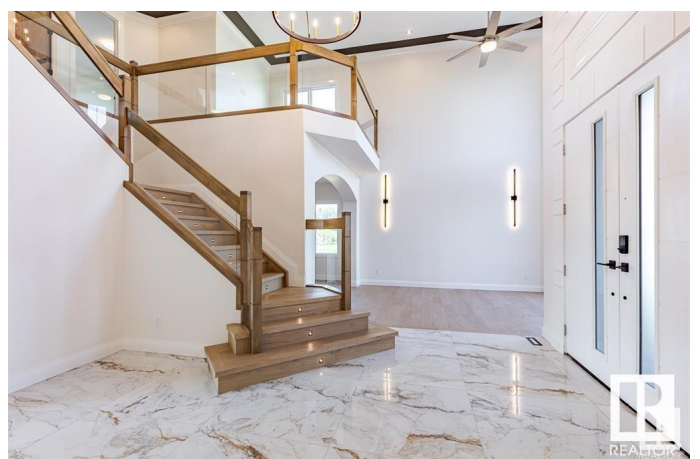
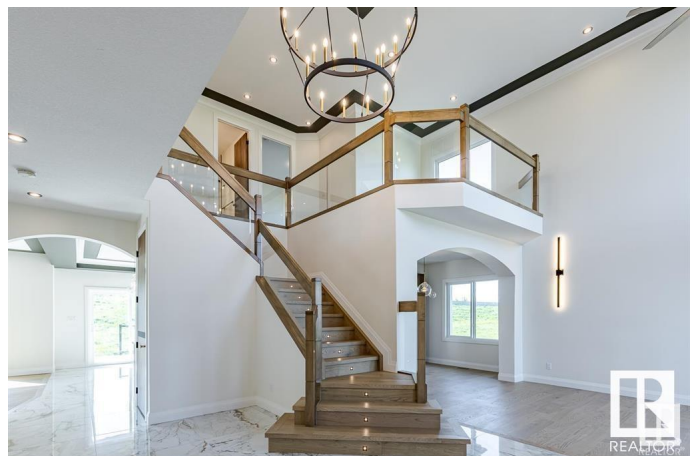
\$1,495,000

4 Bedroom, 3.50 Bathroom, 3,501 sqft

Rural on 1.00 Acres

Spring Meadow Estates, Rural Parkland County, AB

Exceptional Value !! Over 3500 sq ft of Gracious Living Above Ground, plus oversized 4.5 all vehicle att garage, bsmt lower level has separate exterior entrance for flexible dev., possible Walkout Basement over 5100 sq ft. total living possible, Sunroom, INDOOR POOL & BEACH Options !! main floor ... 4 Bedrooms up, 4 washrooms, bsmt can be more bdrms, more washrms, media, gym, Your wish etc. Chefs Dream Kitchen with Second Spice Kitchen, Spacious Open High Valuted Ceilings Floor Plan, large windows for major sunlight. Gorgeous very Large Stately Primary Bedroom with Lavish Spa Resort Ensuite, Huge walk in closet, many wardrobe built ins. Upper floor laundry - Must view built ins throughout, Marble Flooring, Top Vanities, Cabinets, Luxury Appliances, Many Vehicle Driveway, all on hardtop pavement to Your door just 7 min from West Edm Amazing 1 Acre Size Lot with City Water, Sewer. Construction Starting, Photos are of ASR showhome, property to start construction soon, ASR Projects Inc Makes Dreams Reality



Built in 2025

Essential Information

MLS® #	E4420905
Price	\$1,495,000
Bedrooms	4
Bathrooms	3.50
Full Baths	3
Half Baths	1
Square Footage	3,501
Acres	1.00
Year Built	2025
Type	Rural
Sub-Type	Detached Single Family
Style	2 Storey
Status	Active

Community Information

Address	34 26409 Twp Rd 532a
Area	Rural Parkland County
Subdivision	Spring Meadow Estates
City	Rural Parkland County
County	ALBERTA
Province	AB
Postal Code	T7X 0W7

Amenities

Features	Ceiling 10 ft., Ceiling 9 ft., No Animal Home, No Smoking Home, Vaulted Ceiling, Vinyl Windows, 9 ft. Basement Ceiling
Parking Spaces	10

Interior

Interior Features	ensuite bathroom
Heating	Forced Air-2, Natural Gas
Fireplace	Yes
Stories	3
Has Basement	Yes
Basement	Full, Partially Finished

Exterior

Exterior	Wood
Exterior Features	Airport Nearby, Golf Nearby, No Through Road, Park/Reserve, See

	Remarks
Construction	Wood
Foundation	Concrete Perimeter

Additional Information

Date Listed	February 9th, 2025
Days on Market	208
Zoning	Zone 70

DATA IS DEEMED RELIABLE BUT IS NOT GUARANTEED ACCURATE BY THE REALTORS® ASSOCIATION OF EDMONTON. COPYRIGHT 2025 BY THE REALTORS® ASSOCIATION OF EDMONTON. ALL RIGHTS RESERVED. Trademarks are owned or controlled by the Canadian Real Estate Association (CREA) and identify real estate professionals who are members of CREA (REALTOR®, REALTORS®) and/or the quality of services they provide (MLS®, Multiple Listing Service®)

Listing information last updated on September 5th, 2025 at 4:32pm MDT