

## \$189,900 - 101 4128 47 Street, Drayton Valley

MLS® #E4419190

**\$189,900**

2 Bedroom, 2.00 Bathroom, 1,057 sqft

Condo / Townhouse on 0.00 Acres

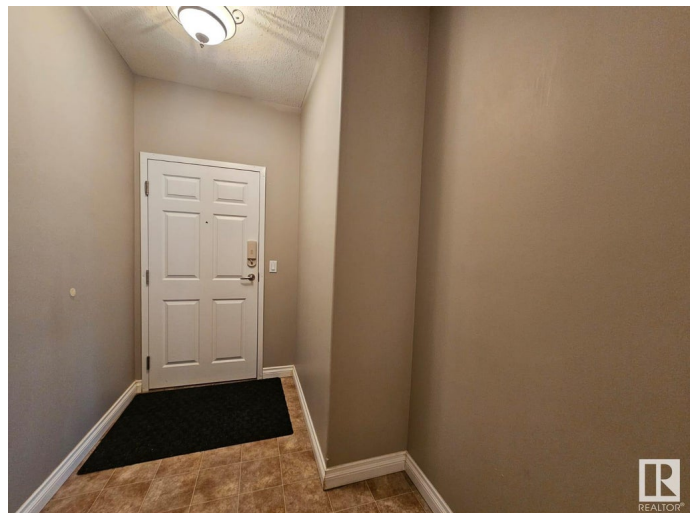
Drayton Valley, Drayton Valley, AB

Beautiful 2 bed, 2 bath, first floor condo in adult building just around the corner from the hospital. This 1057sqft corner unit has much to be desired, offering tons of natural light with its southeast facing balcony, and a generous number of windows throughout, filling the space with natural light! The spacious kitchen offers a large pantry and peninsula, increasing counter space and compliments the open concept layout of the unit. Adjacent from the kitchen is the laundry space with a stacked washer and dryer. The large living room features a corner gas fireplace and access to the balcony. The primary bedroom is large with a walk-in closet and a 3-piece ensuite. The second bedroom is also a good size and is situated right off the main 4-piece bathroom. Unit comes with underground, heated parking and a storage unit!

Built in 2007

### Essential Information

MLS® #	E4419190
Price	\$189,900
Bedrooms	2
Bathrooms	2.00
Full Baths	2
Square Footage	1,057
Acres	0.00



Year Built	2007
Type	Condo / Townhouse
Sub-Type	Lowrise Apartment
Style	Multi Level Apartment
Status	Active

### **Community Information**

Address	101 4128 47 Street
Area	Drayton Valley
Subdivision	Drayton Valley
City	Drayton Valley
County	ALBERTA
Province	AB
Postal Code	T7A 0A9

### **Amenities**

Amenities	Air Conditioner, Deck, Recreation Room/Centre, Secured Parking, Security Door, Storage-Locker Room
Parking	Underground

### **Interior**

Interior Features	ensuite bathroom
Appliances	Dishwasher-Built-In, Freezer, Microwave Hood Fan, Refrigerator, Stacked Washer/Dryer, Stove-Electric, Window Coverings, TV Wall Mount
Heating	Forced Air-1, See Remarks
Fireplace	Yes
Fireplaces	Corner
# of Stories	4
Stories	4
Has Basement	Yes
Basement	None, No Basement

### **Exterior**

Exterior	Wood, Brick, Vinyl
Exterior Features	Back Lane, Shopping Nearby
Roof	Asphalt Shingles
Construction	Wood, Brick, Vinyl
Foundation	Concrete Perimeter

**Additional Information**

Date Listed	January 24th, 2025
Days on Market	145
Zoning	Zone 90
Condo Fee	\$483

DATA IS DEEMED RELIABLE BUT IS NOT GUARANTEED ACCURATE BY THE REALTORS® ASSOCIATION OF EDMONTON. COPYRIGHT 2025 BY THE REALTORS® ASSOCIATION OF EDMONTON. ALL RIGHTS RESERVED.Trademarks are owned or controlled by the Canadian Real Estate Association (CREA) and identify real estate professionals who are members of CREA (REALTOR®, REALTORS®) and/or the quality of services they provide (MLS®, Multiple Listing Service®)

Listing information last updated on June 18th, 2025 at 12:18pm MDT