

## **\$579,000 - 6103 18 Av Sw, Edmonton**

MLS® #E4295094

### **\$579,000**

4 Bedroom, 4.00 Bathroom, 2,035 sqft  
Single Family on 0 Acres

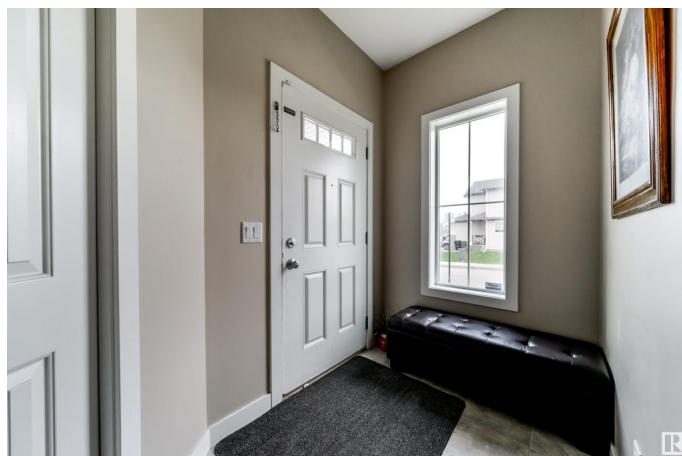
Walker, Edmonton, AB

Welcome to WALKER. This bright 2 story offers 3 bedrooms, 2.5 baths, bonus room, basement developed with 1 room, full bath and kitchen. Main floor 9' ceiling South backing to walking trail has Living area, Dining area, Kitchen with granite countertops & Corner pantry, Laundry, 1/2 bath. Wide stairs with metal spindles leads to upper floor with Primary bedroom, 5 pc ensuite, walk-in closet, 2 other good size bedroom has sharing 4 pc bath with Bonus room. Basement is developed has SEPARATE Entrance through garage, has 1 room, Storage room, laundry and kitchen with stove. Close to School, shopping, transit service. Easy access to Anthony Henday, HW-2. Backyard has huge spectacular composite, no maintenance Deck. Come, check this out, CALL IT HOME.

Built in 2011

### **Essential Information**

MLS® #	E4295094
Price	\$579,000
Bedrooms	4
Bathrooms	4.00
Full Baths	3
Half Baths	1
Square Footage	2,035
Acres	0.10



Year Built	2011
Type	Single Family
Sub-Type	Residential Detached Single Family
Style	2 Storey

### **Community Information**

Address	6103 18 Av Sw
Area	Edmonton
Subdivision	Walker
City	Edmonton
County	ALBERTA
Province	AB
Postal Code	T6X 0W3

### **Amenities**

Features	Ceiling 9 ft., Closet Organizers, Deck, No Animal Home, No Smoking Home, Vaulted Ceiling
Parking	Double Garage Attached
# of Garages	2

### **Interior**

Interior	Carpet, Ceramic Tile, Hardwood
Interior Features	Dishwasher-Built-In, Garage Control, Garage Opener, Hood Fan, Stove-Electric, Stove-Gas, Dryer-Two, Refrigerators-Two, Washers-Two
Heating	Forced Air-1
Bedrooms on Main Level	N
Has Basement	Yes
Basement	Full, Fully Finished
Fireplace	Yes
Fireplaces	Gas, Tile Surround
# of Stories	3

### **Exterior**

Exterior	Vinyl
Exterior Features	Airport Nearby, Corner, Fenced, Flat Site, Landscaped, Playground Nearby, Public Transportation, Schools, Shopping Nearby
Roof	Asphalt Shingles
Construction	Wood Frame
Foundation	Concrete